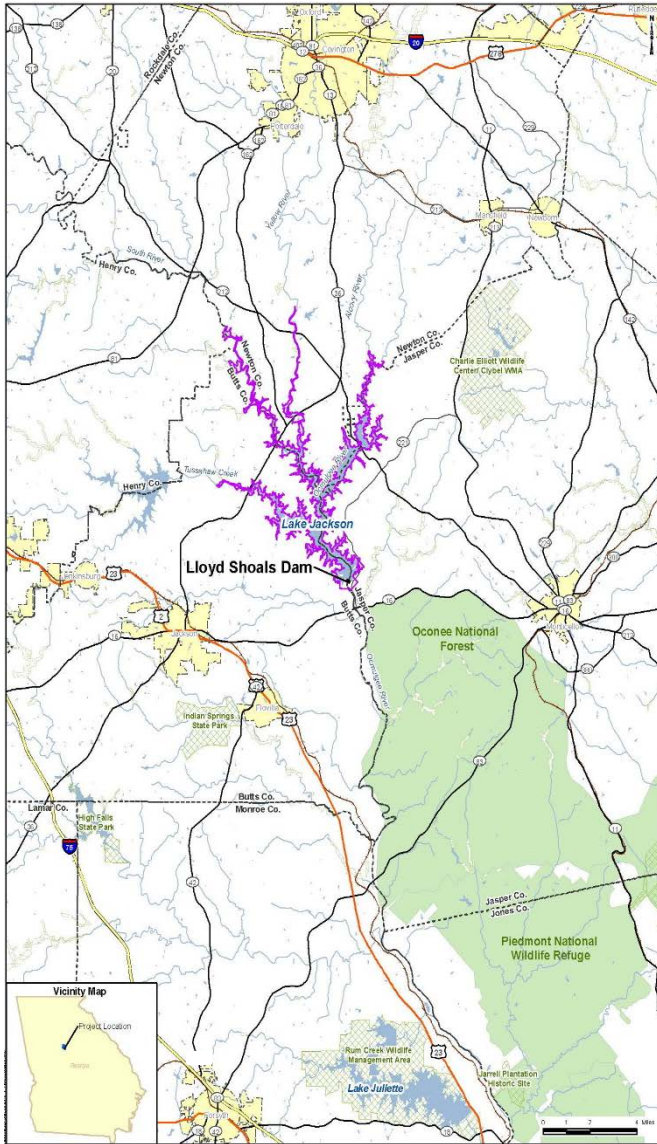


Lloyd Shoals Dam

Lake Jackson

Relicensing Brief: PROJECT LOCATION



- The Lloyd Shoals Dam is located at river mile 250.2 on the Ocmulgee River, downstream of the confluence of the Alcovy, Yellow, and South Rivers and Tussahaw Creek in central Georgia, approximately 35 miles north-northwest of Macon, Georgia, and 40 miles southeast of Atlanta, Georgia.
- The lands and waters within the FERC project boundary lie within parts of Butts, Jasper, Henry, and Newton Counties. The project consists of a reservoir (Lake Jackson), a concrete gravity dam, earthen embankments, a powerhouse, a spillway, a tailrace, and appurtenant facilities.
- There are four recreation facilities for public access to Lake Jackson and the Ocmulgee River downstream.
- Lloyd Shoals Dam is located at Latitude 33.318 degrees N and Longitude 83.848 degrees W.
- The drainage area upstream of the reservoir is about 1,400 square miles. The surface area of the reservoir at full pool (elevation 530 plant datum) is about 4,750 acres with a shoreline length of about 135 miles.
- Lloyd Shoals began operation in 1911. It operates as a modified run-of-river project, where flows are modified over a couple of hours during the peak power period.

Bottom Line Take Away: The Lloyd Shoals Dam is in the Ocmulgee River basin in central Georgia. Lake Jackson covers about 4,750 acres and has about 135 miles of shoreline.

Issue Contact: Courtenay O'Mara and Melissa Crabbe