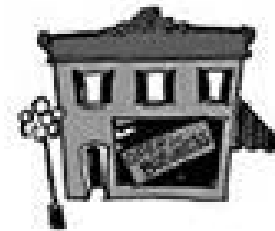
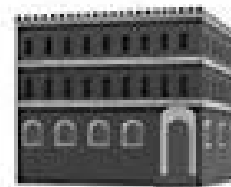
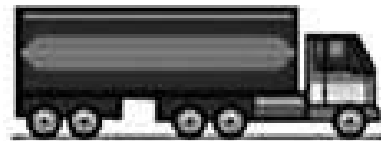
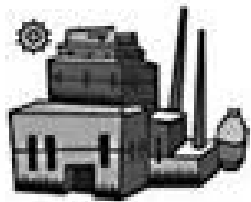


What is Transmission?

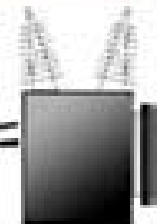
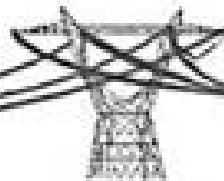
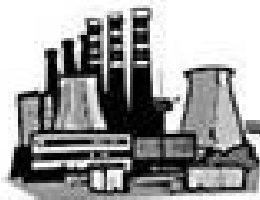


Widget Plant

Transportation

Distribution Warehouse

Store

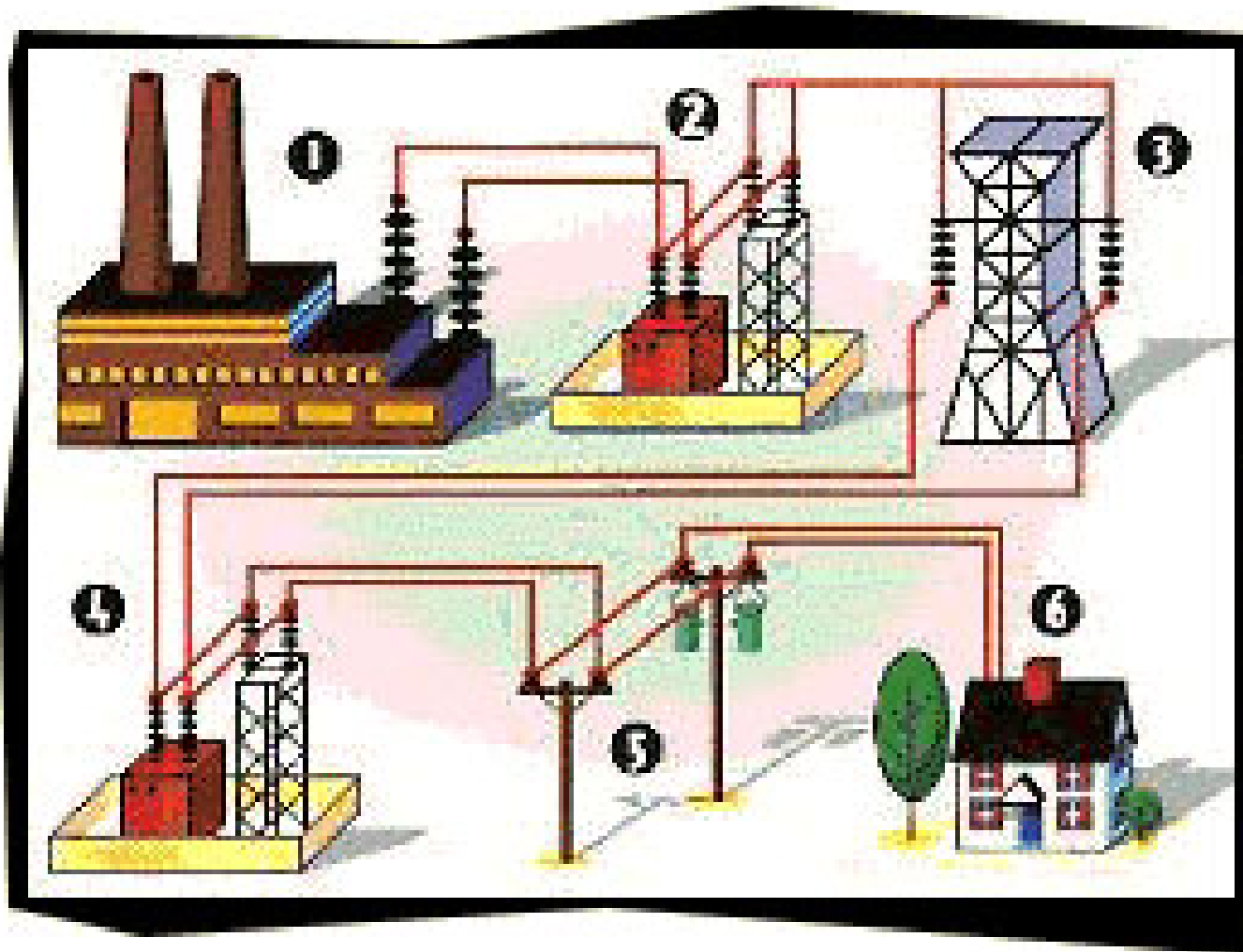


Electric Generator

Transmission

Substation

House



When electricity leaves a power plant (1) its voltage is increased at a "step-up" substation (2). Next, the energy travels along a transmission line (3) to the area where the power is needed. Once there, the voltage is decreased or "stepped-down," at another substation (4), and a distribution power line (5) carries the electricity until it reaches a home or business (6).