



Prepared by
Georgia Power Company
241 Ralph McGill Blvd NE
Atlanta, Georgia 30308

**LEGACY CCR SURFACE
IMPOUNDMENT APPLICABILITY
REPORT
PLANT BRANCH ASH POND B (AP-B)**

November 8, 2024

CERTIFICATION STATEMENT

Pursuant to § 257.100(f)(1)(ii)(A), I hereby certify under penalty of law that I have personally examined and am familiar with the information submitted in this demonstration and all attached documents, and that, based on my inquiry of those individuals immediately responsible for obtaining the information, I believe that the submitted information is true, accurate, and complete. I am aware that there are significant penalties for submitting false information, including the possibility of fine and imprisonment.



Jennifer McNelly
Vice President, Environmental Affairs
Georgia Power Company

November 8, 2024

Date

LEGACY CCR SURFACE IMPOUNDMENT APPLICABILITY REPORT

Legacy CCR Surface Impoundment Contact Information

Facility Name:	Plant Branch
Legacy CCR Surface Impoundment:	AP-B
Identification number:	NPDES Permit No. GA0026051
Site Location:	1100 Milledgeville Rd Milledgeville, GA 31061 33.190303, -83.305425
Owner:	Georgia Power
Owner Address:	241 Ralph McGill Blvd NE, Atlanta, GA 30308
Owner e-mail address:	Gpcenv2@southernco.com
Owner phone number:	404-506-4750

Introduction

On April 17, 2015, the United States Environmental Protection Agency (EPA) published in the Federal Register requirements regarding the management and disposal of CCR titled “40 CFR Parts 257 and 261: Hazardous and Solid Waste Management System; Disposal of Coal Combustion Residuals from Electric Utilities; Final Rule” (i.e., 2015 federal CCR Rule). The 2015 federal CCR Rule, which became effective on October 19, 2015, established requirements regarding the design, operation, closure, post-closure care, monitoring, and corrective action for inactive, existing, and new CCR surface impoundments and existing and new CCR landfills.

In November 2016, the Georgia Environmental Protection Division (GA EPD) adopted amendments to the state’s Rules for Solid Waste Management that incorporated the 2015 federal CCR Rule (GA EPD 391-3-4-.10, i.e., the State CCR Rule). On January 10, 2020, EPA issued notice of approval for Georgia’s CCR permit program, and on February 10, 2020, the GA EPD was authorized by EPA to operate a partial CCR state permit program in lieu of the federal CCR program. The State CCR Rule regulates certain CCR units that were not included by EPA in the final 2015 federal CCR Rule. These CCR units are subject to the requirements of the State CCR Rule, which include obtaining a solid waste permit and routine groundwater monitoring and reporting. Georgia Power submitted a CCR permit application to the GA EPD in November 2018. The CCR permit application is currently under review.

On May 8, 2024, EPA published in the Federal Register a final rule entitled, “Hazardous and Solid Waste Management System: Disposal of Coal Combustion Residuals From Electric Utilities; Legacy CCR Surface Impoundments” (i.e., Legacy Rule). The Legacy Rule establishes regulatory requirements for inactive CCR surface impoundments at inactive facilities that meet the definition of “legacy CCR surface impoundment” as defined in 40 CFR § 257.53.

This applicability report for Plant Branch Ash Ponds B, C and D has been prepared to meet regulatory requirements of 40 CFR § 257.100(f)(1)(i-ii). Ash Ponds B, C and D are “Legacy CCR Surface Impoundments” under the Legacy Rule.

The Legacy Rule requires that owners of legacy CCR surface impoundments, “prepare a[n applicability] report for **each** CCR surface impoundment, no later than Friday, November 8, 2024.” 40 CFR § 257.100(f)(1) (emphasis added). Historically, GA EPD has regulated Ash Ponds B, C and D (AP-BCD) as a CCR combined unit per Ga. Comp. R. & Reg. 391-3-4-.01. Nevertheless, to ensure strict compliance with the Legacy Rule, Georgia Power has prepared separate applicability reports for Ash Ponds B, C and D. All applicability reports contain substantially similar information and have been prepared to meet regulatory requirements 40 CFR § 257.100(f)(1)(i-ii).

Site Description and Background

Plant Branch is located on approximately 3,200 acres of land, off State Route 24 (US 441), on the northern shore of Lake Sinclair near Milledgeville and Eatonton, Putnam County, Georgia. The plant commenced operations in the 1960s, ceased generating electricity prior to April 2015. The former coal-fired plant buildings have been demolished; however, administrative buildings remain and site access is controlled. The current use of the property is limited to closure construction activities that include construction of a beneficial use facility and a new CCR landfill (CCR Permit No. 117-008D(CCR)) associated with CCR rule compliance. Over the course of power generation at the facility, five ash ponds, identified as Ash Ponds A, B, C, D and E were utilized for storage of CCR. AP-BCD are located on the southeast corner of Plant Branch (Figure 1).

Construction of AP-B was completed in 1967, construction of AP-C was completed in November 1970, and construction of AP-D was completed in September 1980. GA EPD has historically regulated Ash Ponds B, C and D (AP-BCD) as a CCR combined unit per Ga. Comp. R. & Reg. 391-3-4-.01. AP-BCD all include earthen dikes, retaining CCR and water, that are regulated as Category II Dams under the GA EPD Safe Dams Program. AP-BCD are also regulated under the current NPDES Permit No. GA0026051 for Plant Branch.

Closure Status

While legacy surface impoundments have been previously exempt from federal regulatory requirements, prior to November 8, 2024, GA EPD has regulated AP-BCD under its state CCR permit program. Georgia Power submitted a CCR permit application to the GA EPD in November 2018 in accordance with the State CCR Rule. The CCR permit application is currently under review by the GA EPD. Georgia Power intends to remove AP-BCD in accordance with 40 CFR § 257.102(c) and corresponding State Rule 391-3-4-.10(7)(b) and relocate the CCR to a permitted landfill and/or sell it for beneficial use.

Groundwater Monitoring Program Status

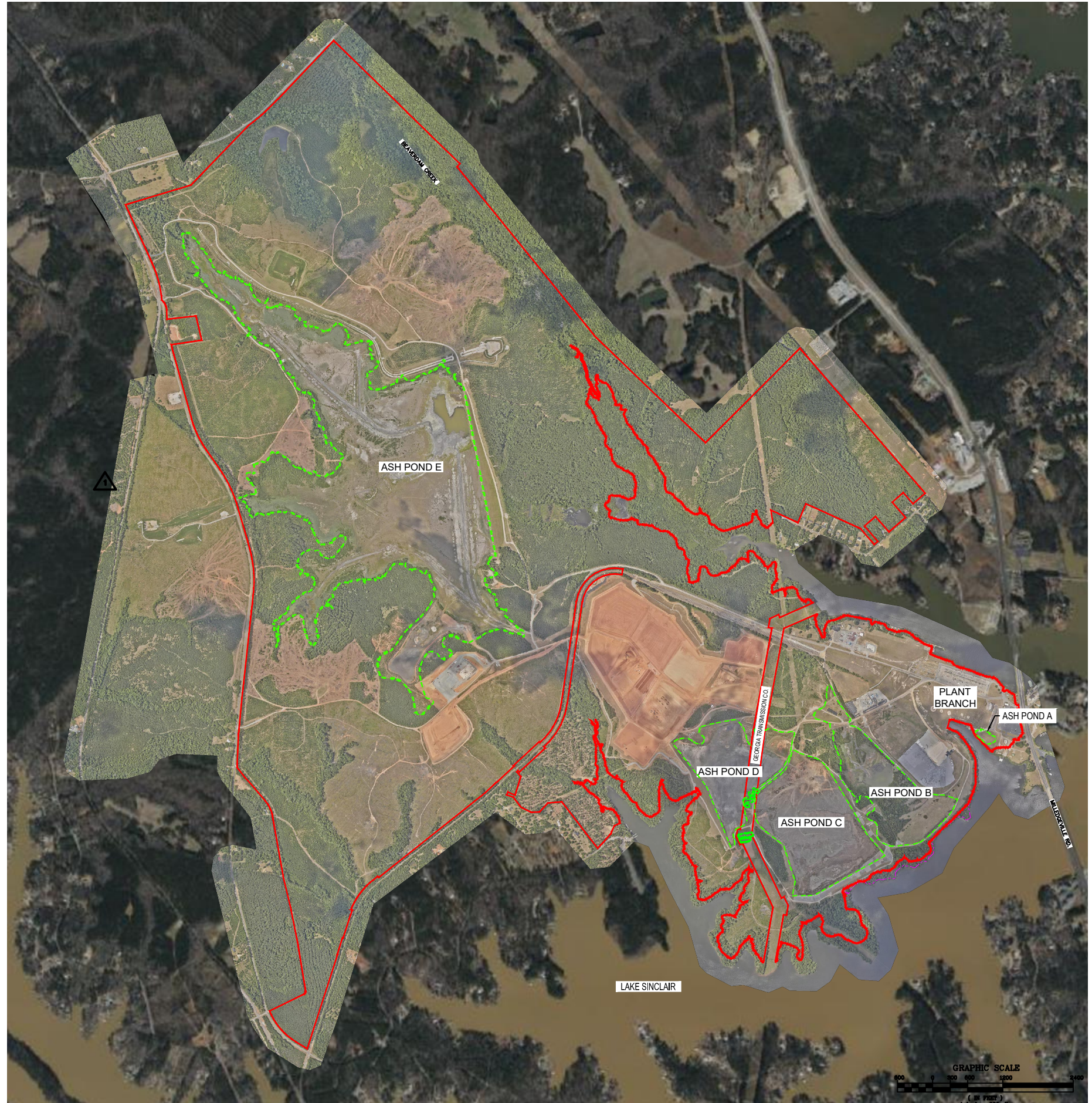
Groundwater monitoring has been implemented at AP-BCD in accordance with the State CCR Rule that incorporates the 2015 federal CCR Rule by reference. Routine sampling and reporting began after the background groundwater conditions were established between 2016 and 2018. Georgia Power continues to complete semiannual monitoring and reporting in accordance with the

State CCR Rule. Groundwater Monitoring Reports are submitted to GA EPD and posted on the Georgia Power CCR Website.

CCR Rule Compliance Data and Information Website

More information can be found at the Georgia Power CCR website for these units located at: <https://www.georgiapower.com/company/environmental-compliance/plant-list/plant-branch.html>

Attachment: Plant Branch Site Figure



LEGEND:

- PROPERTY LINE
- - - APPROXIMATE ASH POND BOUNDARY

NOTES:

1. COORDINATE SYSTEM IS GEORGIA STATE PLANE NAD 83 (1994), WEST ZONE.
2. AERIAL PHOTO SOURCE: GEORGIA POWER COMPANY, JUNE 2024 AND AUTODESK CIVIL 3D 2023 GEOLOCATION ONLINE IMAGING.



ISSUED FOR SUBMITTAL			
PROJECT ID: BRA15005	DATE: 11-6-24	BY: AAJ/JWM	CHK: ACW
Southern Company Technical Shared Services FOR Georgia Power Company			
PLANT BRANCH			
APPLICABILITY REPORT			
ISSUE DATE: 10-29-24	DRAWING NUMBER: FIGURE 1	SHEET: 1	CONTD: FINAL
			REV: 0