

CLOSURE DRAWINGS

FOR

GEORGIA POWER PLANT YATES

INACTIVE CCR LANDFILL - GYPSUM STACK

COWETA COUNTY, GEORGIA

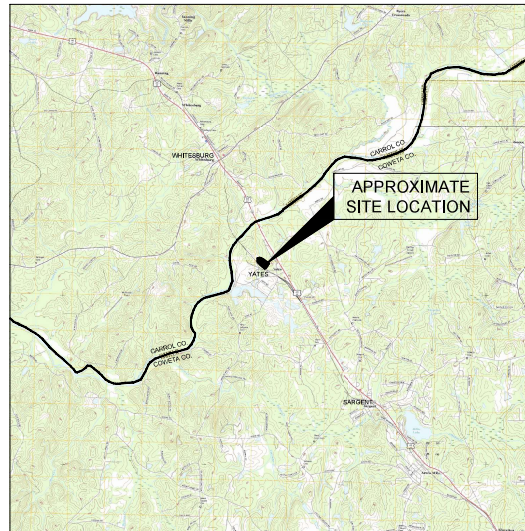
SEPTEMBER 2021

PREPARED FOR:

GEORGIA POWER COMPANY
241 RALPH MCGILL BLVD, NE
ATLANTA, GA 30308
TELEPHONE: (404) 506-6505

SITE ADDRESS

PLANT YATES
708 DYER ROAD
NEWMAN, GA30263
(770) 252-0650



PROJECT SITE LOCATION

SCALE: 1" = 1 MILE
SOURCES: USGS QUAD MAP DATED 2017 WHITESBURG, GA
USGS QUAD MAP DATED 2017 NEWMAN NORTH, GA
USGS QUAD MAP DATED 2017 HULETT, GA
USGS QUAD MAP DATED 2017 RICO, GA



Atlantic Coast Consulting, Inc.
1150 Northcreek Parkway, Suite 100, Roswell, GA 30076
770-594-5998

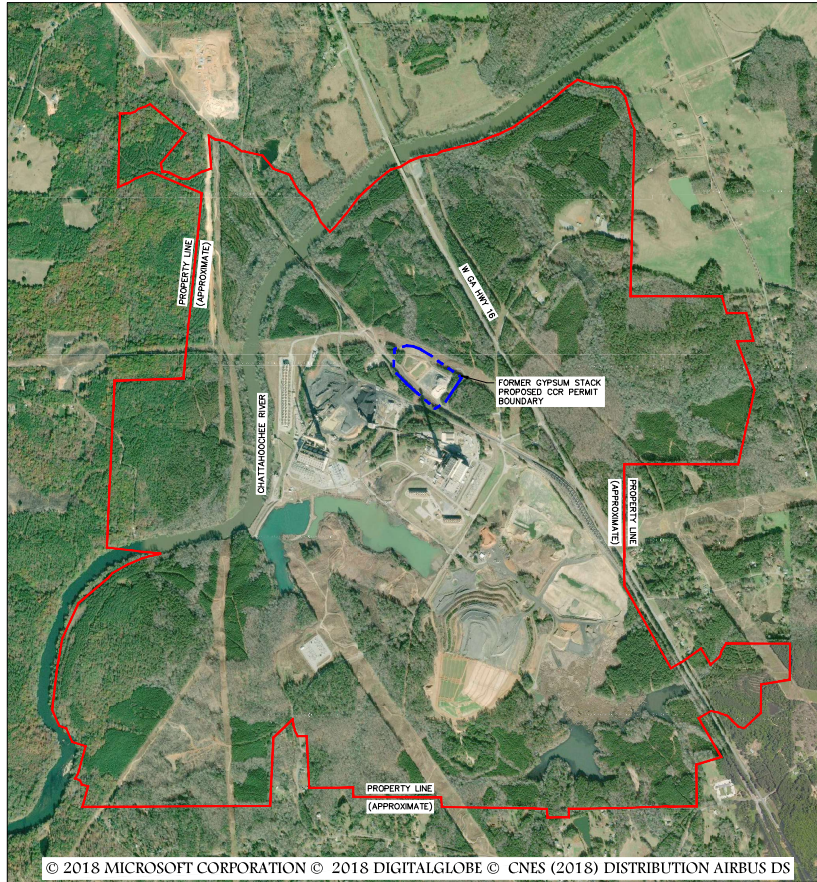
REVISION HISTORY

DATE	SHEETS	REQUESTED BY

INDEX OF DRAWINGS

SHEET NO.	DESCRIPTION
1	COVER
2	PROPERTY BOUNDARY & INDEX
3	PERMIT BOUNDARY & LEGAL DESCRIPTION
4	PRE CLOSURE EXISTING CONDITIONS
5	CLOSURE FINAL GRADE SURVEY





SOURCE: BING MAP 2018
SCALE: 1" = 1000'



LEGEND		
EXISTING	NEW	DESCRIPTION
		APPROXIMATE PROPERTY BOUNDARY
		CCR PERMIT BOUNDARY
		10' CONTOUR
		2' CONTOUR
		PAVED ROAD
		TREELINE
		RAILROAD
		GROUNDWATER MONITORING WELL
		PIEZOMETER
		OVERHEAD POWER LINE
		POWER POLE
		TRANSMISSION LINE TOWER
		PERMANENT IDENTIFICATION MARKER

- GENERAL NOTES:**
- EXISTING PLANT YATES AERIAL TOPOGRAPHY PROVIDED BY GEORGIA POWER DATED MAY 26, 2017.
 - PROPERTY BOUNDARY SHOWN PROVIDED BY SOUTHERN COMPANY SERVICES IN ELECTRONIC FORMAT AND IS APPROXIMATE.

© 2018 MICROSOFT CORPORATION © 2018 DIGITALGLOBE © CNES (2018) DISTRIBUTION AIRBUS DS



PROPERTY BOUNDARY & INDEX			
CLOSURE DRAWINGS			
FOR			
GEORGIA POWER			
PLANT YATES			
INACTIVE CCR LANDFILL - GYPSUM STACK			
COWETA COUNTY, GEORGIA			
ATLANTA: Coker Crawling, Inc. 770-594-9998 www.afdc.net		1150 Northside Parkway Suite 100 Roswell, GA 30076	
PROJ. NO.	1054-107-GYP	DWG.	EDIT
SCALE	1" = 1,000'		
SEPTEMBER 2021			
		SHEET	2 OF 5

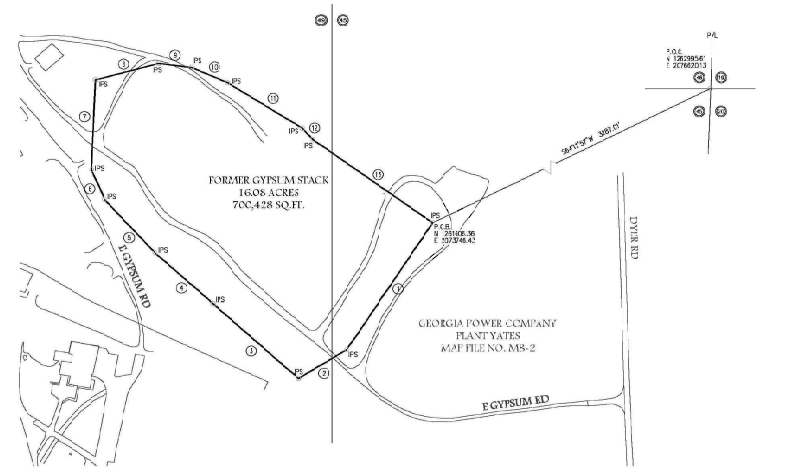
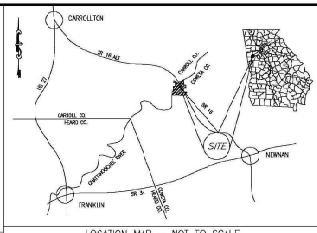
Course	Bearing	Distance
1	S 41°12'34" W	516.53'
2	S 58°51'52" W	112.89'
3	N 48°48'37" W	386.10'
4	N 48°48'31" W	292.00'
5	N 37°31'30" W	251.12'
6	N 22°29'38" W	136.78'
7	N 62°33'38" E	346.77'
8	N 72°29'45" E	212.03'
9	S 82°45'31" E	172.38'
10	S 67°01'52" E	151.19'
11	S 38°31'46" E	289.53'
12	S 42°33'54" E	33.86'
13	S 55°03'16" E	486.59'



Plant Yates Former Gypsum Stack Cull Table

Course	Bearing	Distance
1	S 41°12'34" W	516.53'
2	S 58°51'52" W	112.89'
3	N 48°48'37" W	386.10'
4	N 48°48'31" W	292.00'
5	N 37°31'30" W	251.12'
6	N 22°29'38" W	136.78'
7	N 62°33'38" E	346.77'
8	N 72°29'45" E	212.03'
9	S 82°45'31" E	172.38'
10	S 67°01'52" E	151.19'
11	S 38°31'46" E	289.53'
12	S 42°33'54" E	33.86'
13	S 55°03'16" E	486.59'

- UTILITY LEGEND
- ⊖ Electric Meter
 - ⊖ Gas Meter
 - ⊖ Sanitary Sewer Manhole
 - ⊖ Sanitary Sewer Cleanout
 - ⊖ Storm Sewer Manhole
 - ⊖ Telephone Manhole
 - ⊖ Water Manhole
 - ⊖ Water Meter
 - ⊖ Fire Hydrant
 - ⊖ Power Pole
 - ⊖ Transmission Tower
 - ⊖ City Wire



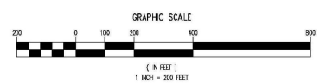
Plant Yates - Former Gypsum Stack

All lot, parcel or tract of land, and being in lot, lots 43 and 44 of the 4th District, Coweta County, Georgia and being more particularly described as follows:

Commencing at the common corner of Land Lots 43, 15, 29, and 44; Thence along S 41°12'34" W a distance of 3,267 feet more or less to an iron pin set at the Georgia South Ferry West Zone, NCEC coordinates of N 128 856.33 and E 277294.43; Thence north South 34 degrees 18 minutes 34 seconds West a distance of 500.00 feet to a pin; Thence north South 48 degrees 28 minutes 28 seconds West a distance of 154.88 feet to a pin; Thence north South 48 degrees 48 minutes 27 seconds West a distance of 385.00 feet to a pin; Thence north North 46 degrees 42 minutes 51 seconds West a distance of 251.12 feet to a pin; Thence north North 22 degrees 28 minutes 26 seconds West a distance of 136.78 feet to a pin; Thence north North 62 degrees 33 minutes 38 seconds East a distance of 346.77 feet to a pin; Thence north North 72 degrees 29 minutes 45 seconds East a distance of 212.03 feet to a pin; Thence north North 82 degrees 45 minutes 31 seconds East a distance of 172.38 feet to a pin; Thence north North 67 degrees 01 minutes 52 seconds East a distance of 151.19 feet to a pin; Thence north South 38 degrees 31 minutes 46 seconds East a distance of 289.53 feet to a pin and the Point of Beginning.

Said tract contains 16.08 acres (700,428 square feet).

- PLAT ABBREVIATIONS
- IPF - Iron Pin Found
 - IPB - Iron Pin Set
 - FPF - Fence Post Set
 - OTF - Open Top Pipe
 - CTF - Closed Top Pipe
 - CC - Concrete
 - AL - Aluminum
 - PL - Plastic Pipe
 - W - Wood
 - C - Cast Iron
 - E - Enamelled
 - T/A - Transmission Line
 - NF - Non Ferrous
 - IS - Steel
 - MS - Metal
 - MF - Map File No.
 - N.T.S. - Not to Scale
 - P.C.C. - Point of Commencement
 - F.P. - Point of Beginning
 - SH - Sectional Hole
 - U.F.P. - Underground Pipe
 - CH - Covered Hole
 - GP - Georgia Power Company



SURVEY CLOSURE STATEMENT

The field data upon which this plat is based has a closure precision of one foot in 58,269 feet, and an angular error of 1.1 per cent per station, and was adjusted using Least Squares method.

This plat has been calculated for closure and is found to be accurate within one foot in 58,269 feet.

Linear Measurement obtained using Leica 70-15 & Topcon SPS30.

Angular Measurement obtained using Topcon SPS30.

Field Work complete 1/29/2017.

NOTE: BACKGROUND IMPROVEMENTS PER CONTIGUOUS PLAT MAINTAINED BY LOWE ENGINEERS, LLC, DATE: AUGUST 15, 2018

F.I.R.M. F.O.O.D. NOTE: THIS PROPERTY IS LOCATED IN A 100 FT. F.I.R.M. FLOODPLAIN, (BY GRAPHIC FLOODING ONLY) ACCORDING TO F.I.R.M. F.O.O.D. MAP OF FLOYD COUNTY, GA. COMMUNITY PANEL NO. 131503465 E, 131520184 E & 131500251 E, DATE: SEPTEMBER 25, 2009.

NOTE: BACKGROUND IMPROVEMENTS PER YATES COB BOUNDARIES DRAWING PROVIDED BY GPC, DATED SEPTEMBER 4, 2018

REFERENCES:

- GPC DRAWING 2018-3-4 YATES COB BOUNDARIES
- FRODOX COB PERMIT BOUNDARIES BY ATLANTIC COAST CONSULTING, DATED AUGUST 2018.

SURVEYOR: WILLIAM J. DANIEL II
 LICENSE NO. 21637
 910 HANCOCK DRIVE, SUITE 110
 ATLANTA, GA 30326
 PHONE: 770 527-9601

I hereby certify that this survey has been prepared in accordance with the Professional Standards for Professional Surveyors in Georgia set forth in Chapter 187 of the State of Georgia Code of Regulations for Professional Surveyors and said Surveyors are not aware of any facts in the Georgia Plat Act, C.C.S.A. 11-4-17.

And further verify this conformity to Georgia Code before 11:45 AM on 8/20/18. This plat is not required to be reviewed by any local governing collection prior to recording for public notice. The approval shall be required if it is not done or made on expense or no new utility approval or approval of a public utility is required. No such improvements are required herein.

Date: March 20, 2018

GEORGIA POWER CO., ATLANTA, GA.
 Land Department

Plant Yates - Former Gypsum Stack
 Fertilized Site Boundary

LAND LOTS 45 & 44, 4TH DISTRICT, COWETA COUNTY, GEORGIA

DATE: 1.23.2017
 SCALE: 1" = 200'
 DRAWING NUMBER: P469-8(5)

- MONUMENTATION LEGEND
- ⊖ Iron Pin Set
 - ⊖ Iron Pin Found
 - ⊖ Monument Set
 - ⊖ Monument Found
 - ⊖ Computed Point
 - ⊖ Dashed or Faint Iron Pin
 - ⊖ Dashed or Faint Gas Meter
 - ⊖ Benchmark or Temporary Benchmark (USA)

GEORGIA
 ENVIRONMENTAL PROTECTION DIVISION

Approved
 Solid Waste Management Program

Keith Stevens
 2017-2021

PERMIT BOUNDARY & LEGAL DESCRIPTION

CLOSURE DRAWINGS FOR
 GEORGIA POWER PLANT YATES INACTIVE COB LANDFILL - GYPSUM STACK COWETA COUNTY, GEORGIA

ACC

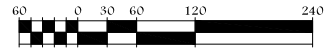
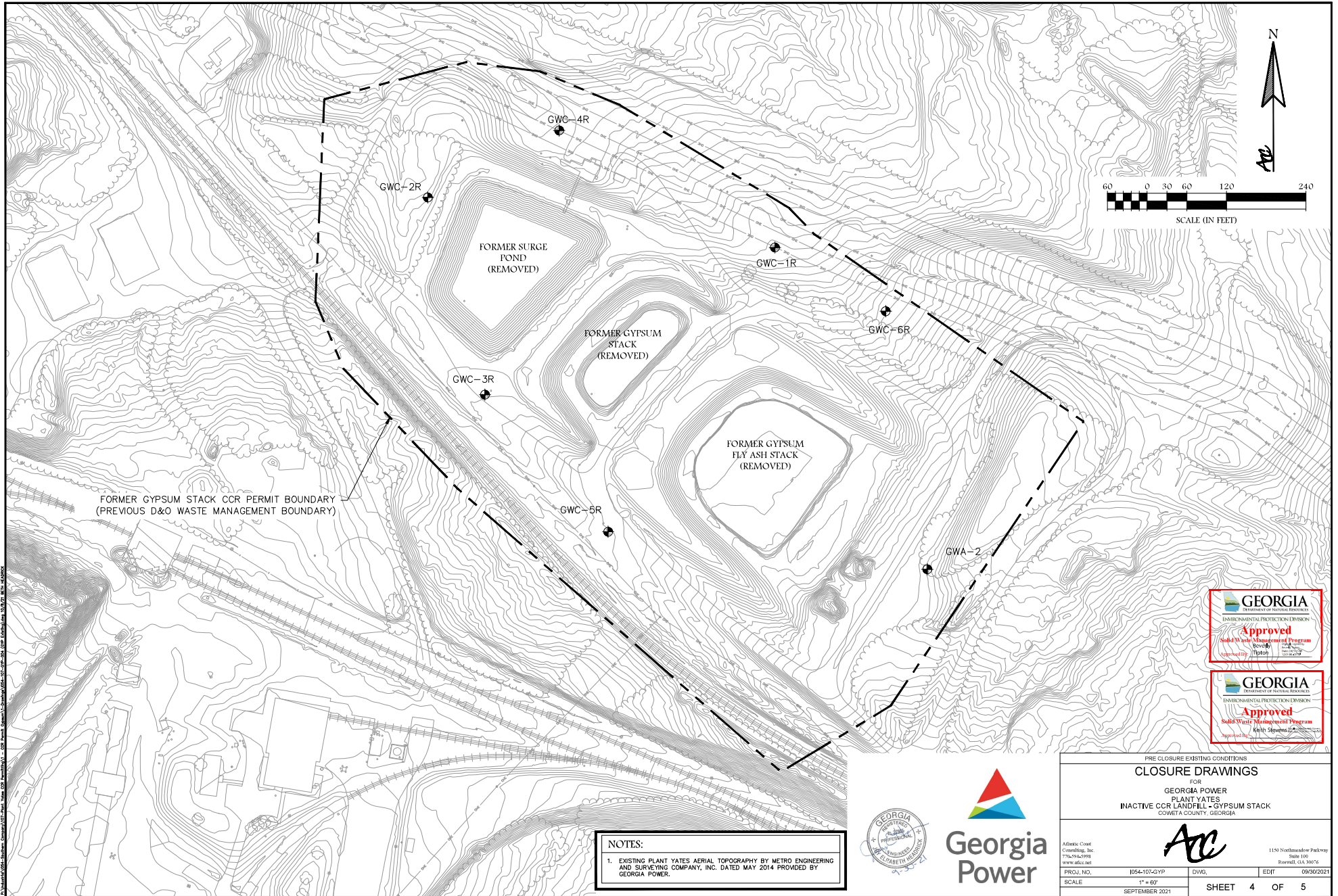
119 Northwoodway Parkway
 Suite 100
 Roswell, GA 30076

PROJECT NO. 1054-107-GYP
 SCALE 1" = 200'
 DATE: SEPTEMBER 2021

DWG. NO. 09/30/2021
 EDIT

SHEET 3 OF 5





SCALE (IN FEET)

FORMER GYPSUM STACK CCR PERMIT BOUNDARY
(PREVIOUS D&O WASTE MANAGEMENT BOUNDARY)

FORMER SURGE POND
(REMOVED)

FORMER GYPSUM STACK
(REMOVED)

FORMER GYPSUM FLY ASH STACK
(REMOVED)

GWC-4R

GWC-2R

GWC-1R

GWC-6R

GWC-3R

GWC-5R

GWA-2



NOTES:
1. EXISTING PLANT YATES AERIAL TOPOGRAPHY BY METRO ENGINEERING AND SURVEYING COMPANY, INC. DATED MAY 2014 PROVIDED BY GEORGIA POWER.



PRE CLOSURE EXISTING CONDITIONS
CLOSURE DRAWINGS
FOR
GEORGIA POWER
PLANT YATES
INACTIVE CCR LANDFILL - GYPSUM STACK
COWETA COUNTY, GEORGIA

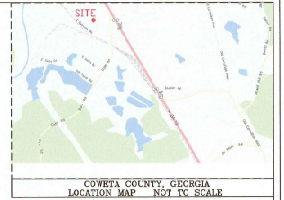
ACC

Allstate: Cowie Consulting, Inc. 770-54-5998 www.allstate.com	1145 Northmeadow Parkway Suite 100 Roswell, GA 30076
PROJECT NO. 1054-107-GYP SCALE 1" = 60' SEPTEMBER 2021	DIVS. EDIT 09/30/2021 SHEET 4 OF 5

\Users\A00520\Documents\GIS\Drawings\2021\1054-107-GYP\1054-107-GYP-Closure\1054-107-GYP-Closure.dwg, 9/30/2021, 10:48:00 AM

**PLANT YATES
GYPSUM POND CLOSURE
FINAL GRADE SURVEY
COWETA COUNTY, GEORGIA
OCTOBER 2016**

CONTROL REBAR
RG-E2
N 261328.21
E 207280.88
E 173509



CLOSURE FINAL GRADE SURVEY
CLOSURE DRAWINGS
FOR
GEORGIA POWER
PLANT YATES
INACTIVE COR LANDFILL - GYPSUM STACK
COWETA COUNTY, GEORGIA
SHEET 5 OF 5

CERTIFICATION POINT TABLE

Grid Point #	Northing	Easting	As Built Closure cut Elevation	As Built Undercut Elevation	Cut Thickness	Finished Elevation	Date Surveyed Clean cut	Date Surveyed Elevation	Date Finished Elevation
1	1261951.428	2072899.988	767.54	757.00	-0.54	755.77	10.06.16	10.11.15	10.21.16
2	1261899.985	2072998.385	765.05	754.56	-0.50	754.52	10.06.16	10.11.15	10.21.16
3	1261900.024	2072900.288	755.24	754.51	-0.73	755.3	10.06.16	10.11.15	10.21.16
4	1261900.080	2072800.057	764.80	754.13	-0.57	754.83	10.06.16	10.11.15	10.21.16
5	1261959.997	2072788.309	767.12	756.55	-0.57	757.46	10.06.16	10.11.15	10.21.16
6	1261800.000	2072800.000	755.23	754.72	-0.56	755.5	10.06.16	10.11.15	10.21.16
7	1261800.000	2072800.000	755.13	754.60	-0.50	754.63	10.06.16	10.11.15	10.21.16
8	1261800.000	2073000.000	764.48	753.97	-0.51	750.15	09.08.16	09.15.13	10.21.16
9	1261800.025	2073099.954	760.53	759.86	-0.73	752.64	09.08.16	09.15.13	10.21.16
10	1261999.981	2073199.944	774.13	773.09	-1.30	755.16	09.08.16	09.15.13	10.11.16
11	1261886.508	2073062.732	766.21	756.58	-0.77	755.43	09.08.16	09.15.13	10.21.16
12	1261870.941	2073099.892	766.48	756.11	-1.34	753.85	09.08.16	09.15.13	10.21.16
13	1261743.550	2073300.000	773.90	773.29	-0.53	773.14	09.08.16	09.08.13	10.11.16
14	1261700.000	2073365.366	776.85	776.26	-0.60	779.68	09.08.16	09.08.13	10.11.16
15	1261700.000	2073300.000	776.64	769.77	-3.37	775.55	09.08.16	09.08.13	10.11.16
16	1261700.000	2073200.000	777.35	770.74	-0.61	770.67	09.08.16	09.08.13	10.11.16
17	1261700.000	2073100.000	764.75	764.15	-0.60	754.40	09.08.16	09.11.13	10.11.16
18	1261700.000	2073000.000	765.88	760.17	-0.64	752.17	09.08.16	09.15.13	10.21.16
19	1261700.000	2073000.000	765.29	764.58	-0.65	751.15	09.08.16	09.15.13	10.21.16
20	1261700.012	2072850.470	761.25	756.10	-1.15	754.95	10.11.15	10.11.15	10.21.16
21	1261518.455	2073000.000	761.07	756.32	-0.55	754.93	09.08.16	09.15.13	10.21.16
22	1261599.939	2072924.570	761.65	766.36	1.30	754.88	09.08.16	09.15.13	10.21.16
23	1261599.992	2073000.070	764.05	763.30	-0.76	754.21	09.08.16	09.15.13	10.11.16
24	1261600.000	2073100.000	773.38	771.71	-1.47	757.77	09.08.16	09.08.13	10.11.16
25	1261600.000	2073200.000	777.55	770.30	-0.65	774.27	09.08.16	09.08.13	10.11.16
26	1261600.000	2073300.000	773.88	773.53	-0.79	757.72	09.08.16	09.08.13	10.11.16
27	1261600.000	2073400.000	786.38	779.23	-0.95	787.24	09.08.16	09.08.13	10.11.16
28	1261600.000	2073500.000	796.61	789.28	-1.33	793.74	09.08.16	09.08.13	10.11.16
29	1261515.347	2073500.000	796.96	788.95	-1.61	792.93	09.08.16	09.08.13	10.11.16
30	1261588.664	2073544.340	794.27	795.56	1.26	799.19	09.08.16	09.08.13	10.11.16
31	1261500.000	2073500.000	794.81	797.99	-0.82	798.97	09.08.16	09.08.13	10.11.16
32	1261500.000	2073400.000	784.00	783.42	-0.58	792.5	09.08.16	09.08.13	10.11.16
33	1261500.000	2073300.000	778.49	778.85	-0.63	785.95	09.08.16	09.08.13	10.11.16
34	1261500.000	2073200.000	771.28	772.54	-0.74	779.52	09.08.16	09.08.13	10.11.16
35	1261500.000	2073100.000	771.90	769.74	-1.56	775.06	09.08.16	09.08.13	10.11.16
36	1261499.997	2073051.245	774.55	774.38	-0.57	768.85	09.08.16	09.08.13	10.11.16
37	1261533.957	2072999.996	776.30	774.69	-0.61	768.87	09.08.16	09.08.13	10.11.16
38	1261426.581	2073100.000	777.40	776.82	-0.58	776.82	09.08.16	09.08.13	10.11.16
39	1261400.000	2073249.970	778.69	778.33	-0.56	779.66	09.08.16	09.08.13	10.11.16
40	1261400.000	2073300.000	777.55	776.60	-0.68	764.77	09.08.16	09.08.13	10.11.16
41	1261400.000	2073400.000	783.22	782.64	-0.58	781.25	09.08.16	09.08.13	10.11.16
42	1261400.000	2073500.000	788.59	788.02	-0.97	797.7	09.08.16	09.08.13	10.11.16
43	1261399.973	2073455.409	794.53	797.69	-1.22	801.79	09.08.16	09.08.13	10.11.16
44	1261307.698	2073400.000	793.43	797.55	-0.86	801.15	09.08.16	09.08.13	10.11.16
45	1261300.000	2073300.000	787.53	786.59	-0.64	796.44	09.08.16	09.08.13	10.11.16
46	1261300.000	2073200.404	787.66	787.24	-0.62	793.06	09.08.16	09.08.13	10.11.16
47	1261336.779	2073200.000	784.74	783.95	-0.78	788.42	09.08.16	09.08.13	10.11.16
48	1261265.294	2073300.000	797.16	792.14	-0.82	788.25	09.08.16	09.08.13	10.11.16
49	1261248.076	2073377.227	793.98	794.72	-0.86	813.11	09.08.16	09.08.13	10.11.16
50	1261676.873	2073400.000	778.55	778.02	-0.81	781.2	09.08.16	09.08.13	10.11.16
51	1261800.000	207312.000	791.08	790.37	-0.71	794.48	09.08.16	09.08.13	10.11.16
52	1261754.750	2072900.000	757.18	766.42	-0.78	765.06	10.06.16	10.11.16	10.21.16

- NOTE:**
 1) All Coordinates are Georgi State Plane - West Zone NAD 83
 all elevations shown are NAVD 88
 2) Contours from Digital Terrain Model of Field surveyed data collected September 2016.
 3) Equipment used is Topcon Hyper Lite Plus GPS
 4) This plan has been calculated for closure and was found to be accurate within one foot in 10,000 feet.
 5) Field Survey by Roy L. Gifford, P.C.
 122 North Colburn Avenue
 P.O. Box 1193
 Sylacauga, Alabama 35150
 Tel. No. (256) 245-2843



ROY L. GODWIN A REGISTERED SURVEYOR IN THE STATE OF GEORGIA
 HEREBY CERTIFY THE MAP OR PLAN IS THE WORK SURVEY MADE UNDER
 MY DIRECT SUPERVISION IN ACCORDANCE WITH THE GEORGIA ACT
 1957-4-5-78 AND G.A.C. 119-4-54 8674-11-62. THE ABOVE SURVEY WAS
 PERFORMED USING EXISTING SURVEYS.

Georgi Registered and Surveyor No. 2094

November 1, 2016



RAY & GILLILAND, P.C.
 632 NORTH WALHUN AVENUE
 P.O. BOX 1025
 SYLACAUGA, ALABAMA 35150
 TEL: (256) 245-2840
 FAX: (256) 245-2882
 FILED: S. LEANOR
 SCALE: 1" = 50'
 DATE: 10/20/16

ROY GODWIN IS ACTING AGENT FOR FOUR CORNERS SURVEYING



GEORGIA

DEPARTMENT OF NATURAL RESOURCES

ENVIRONMENTAL PROTECTION DIVISION

Jeffrey W. Cown, Director

Land Protection Branch
4244 International Parkway
Suite 104
Atlanta, Georgia 30354
404-362-2537

January 11, 2024

Ms. Lauren Petty
Environmental Affairs
Georgia Power
241 Ralph McGill Boulevard
Atlanta, GA 30308

SUBJECT: Coweta County – Georgia Power Plant Yates Gypsum Landfill
Minor Modification for Geotechnical Investigation - Approval
GEOS Submittal ID 811910

Dear Ms. Petty:

The Georgia Environmental Protection Division (EPD) received Georgia Power's *Plant Yates Gypsum Landfill Minor Modification Request – Geotechnical Investigation*, on January 6, 2024. The Request for Minor Modification is approved contingent upon the depth of the test pit not exceeding the depth of the groundwater table.

If you have any questions or need additional information, please contact me by email or phone at tammy.buchli@dnr.ga.gov or (470) 604-7150.

Sincerely,

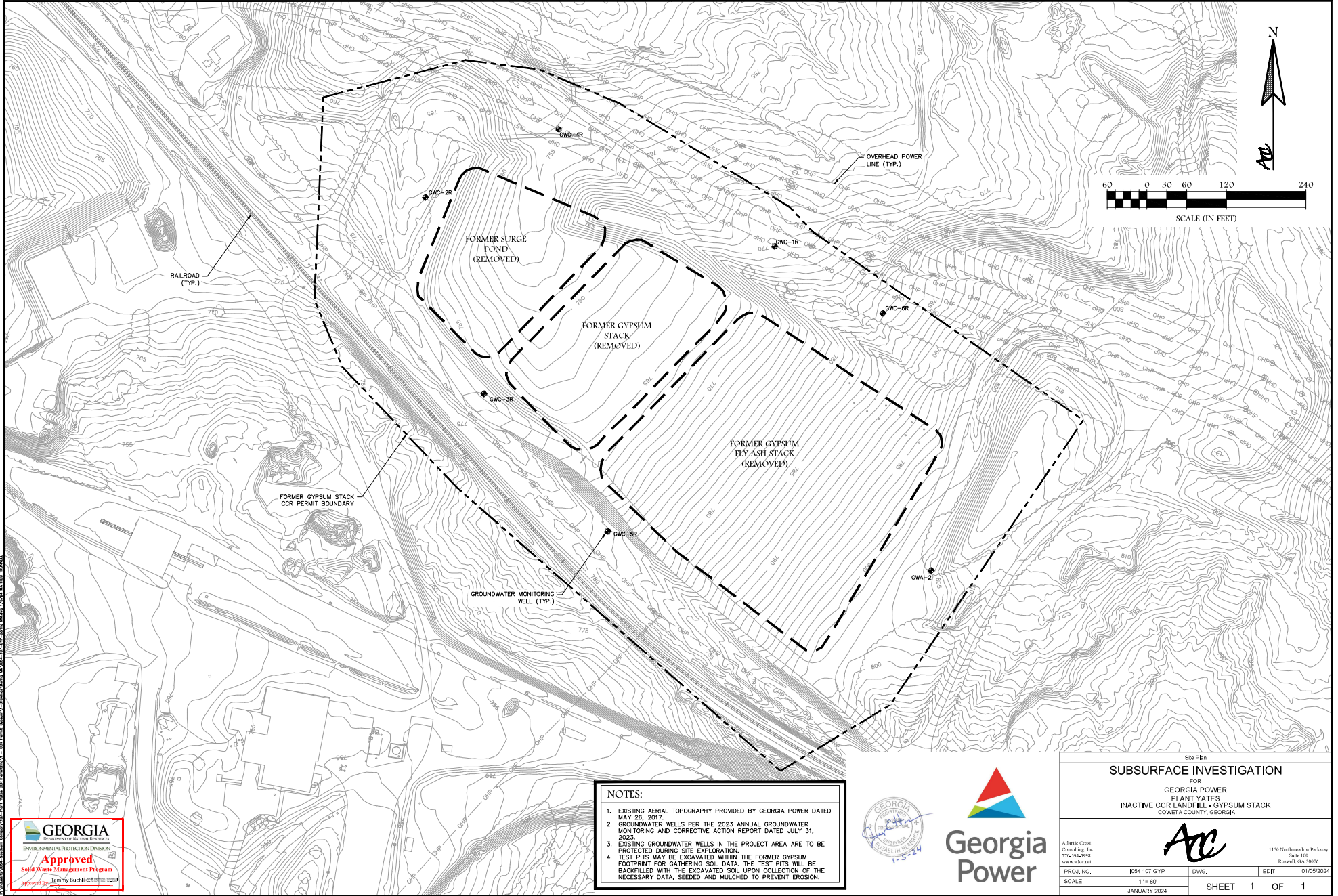
Tammy Buchli Digitally signed by Tammy Buchli
Date: 2024.01.11 15:30:11 -05'00'

Tammy Buchli
Environmental Engineer
Solid Waste Permitting Unit
Solid Waste Management Program

**Nabil
Murshed** Digitally signed by
Nabil Murshed
Date: 2024.01.11
15:24:22 -05'00'

Nabil Murshed
Geologist
Environmental Monitoring Unit
Solid Waste Management Program

cc: Tyler Boyles, Tim Earl, David Gibbons, Bret McClellan: GP
William Cook, Keith Stevens, and Beverly Tipton: EPD
GEOS 811910



- NOTES:**
1. EXISTING AERIAL TOPOGRAPHY PROVIDED BY GEORGIA POWER DATED MAY 26, 2017.
 2. GROUNDWATER WELLS PER THE 2023 ANNUAL GROUNDWATER MONITORING AND CORRECTIVE ACTION REPORT DATED JULY 31, 2023.
 3. EXISTING GROUNDWATER WELLS IN THE PROJECT AREA ARE TO BE PROTECTED DURING SITE EXPLORATION. TEST PITS MAY BE EXCAVATED WITHIN THE FORMER GYPSUM FOOTPRINT FOR GATHERING SOIL DATA. THE TEST PITS WILL BE BACKFILLED WITH THE EXCAVATED SOIL UPON COLLECTION OF THE NECESSARY DATA, SEEDED AND MULCHED TO PREVENT EROSION.



Site Plan			
SUBSURFACE INVESTIGATION			
FOR			
GEORGIA POWER			
PLANT YATES			
INACTIVE CCR LANDFILL - GYPSUM STACK			
COWETA COUNTY, GEORGIA			
ACC			
<small>Atlanta, Ga. Crawling, Inc. 770-594-9998 www.ajcc.net</small>		<small>1150 Northmeadow Parkway Suite 100 Roswell, GA 30076</small>	
PROJECT NO.	1054-107-GYP	DWG.	EDIT
SCALE	1" = 50'	DATE	
	JANUARY 2024	01/16/2024	
SHEET 1 OF 1			



GEORGIA

DEPARTMENT OF NATURAL RESOURCES

ENVIRONMENTAL PROTECTION DIVISION

Jeffrey W. Cown, Director

Land Protection Branch
4244 International Parkway
Suite 104
Atlanta, Georgia 30354
404-362-2537

June 24, 2024

Ms. Lauren Petty
Environmental Affairs
Georgia Power
241 Ralph McGill Boulevard
Atlanta, GA 30308

SUBJECT: Coweta County – Georgia Power Plant Yates Gypsum Landfill
Minor Modification for Laydown Yard - Approval
GEOS Submittal ID 848308

Dear Ms. Petty:

The Georgia Environmental Protection Division (EPD) received Georgia Power's revised *Plant Yates Gypsum Landfill Minor Modification Request – Laydown Yard*, on June 21, 2024. The Request for Minor Modification for construction of a laydown yard for contractor equipment and material storage to support the construction of new power generation units at Plant Yates is approved.

If you have any questions or need additional information, please contact me by email or phone at tammy.buchli@dnr.ga.gov or (470) 604-7150.

Sincerely,

Tammy Buchli Digitally signed by Tammy Buchli
Date: 2024.06.24 11:54:21 -04'00'

Tammy Buchli
Environmental Engineer
Solid Waste Permitting Unit
Solid Waste Management Program

cc: Tyler Boyles, Tim Earl, David Gibbons, Bret McClellan: GP
William Cook, Keith Stevens, and Beverly Tipton: EPD
GEOS 848308

GEORGIA POWER PLANT YATES INACTIVE CCR LANDFILL - GYPSUM STACK MINOR MODIFICATION

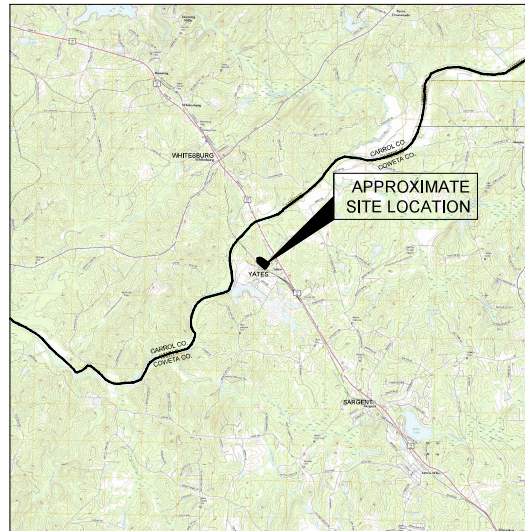
COWETA COUNTY, GEORGIA
JUNE 2024

PREPARED FOR:

GEORGIA POWER COMPANY
241 RALPH MCGILL BLVD, NE
ATLANTA, GA 30308
TELEPHONE: (404) 506-6505

SITE ADDRESS

PLANT YATES
708 DYER ROAD
NEWMAN, GA30263
(770) 252-0650



PROJECT SITE LOCATION

SCALE: 1" = 1 MILE
SOURCES: USGS QUAD MAP DATED 2017 WHITESBURG, GA
USGS QUAD MAP DATED 2017 NEWMAN NORTH, GA
USGS QUAD MAP DATED 2017 HULETT, GA
USGS QUAD MAP DATED 2017 RICO, GA

REVISION HISTORY

DATE	SHEETS	REQUESTED BY
6/14/2024	3, 4 & 5	GA EPD

INDEX OF DRAWINGS

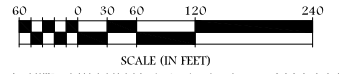
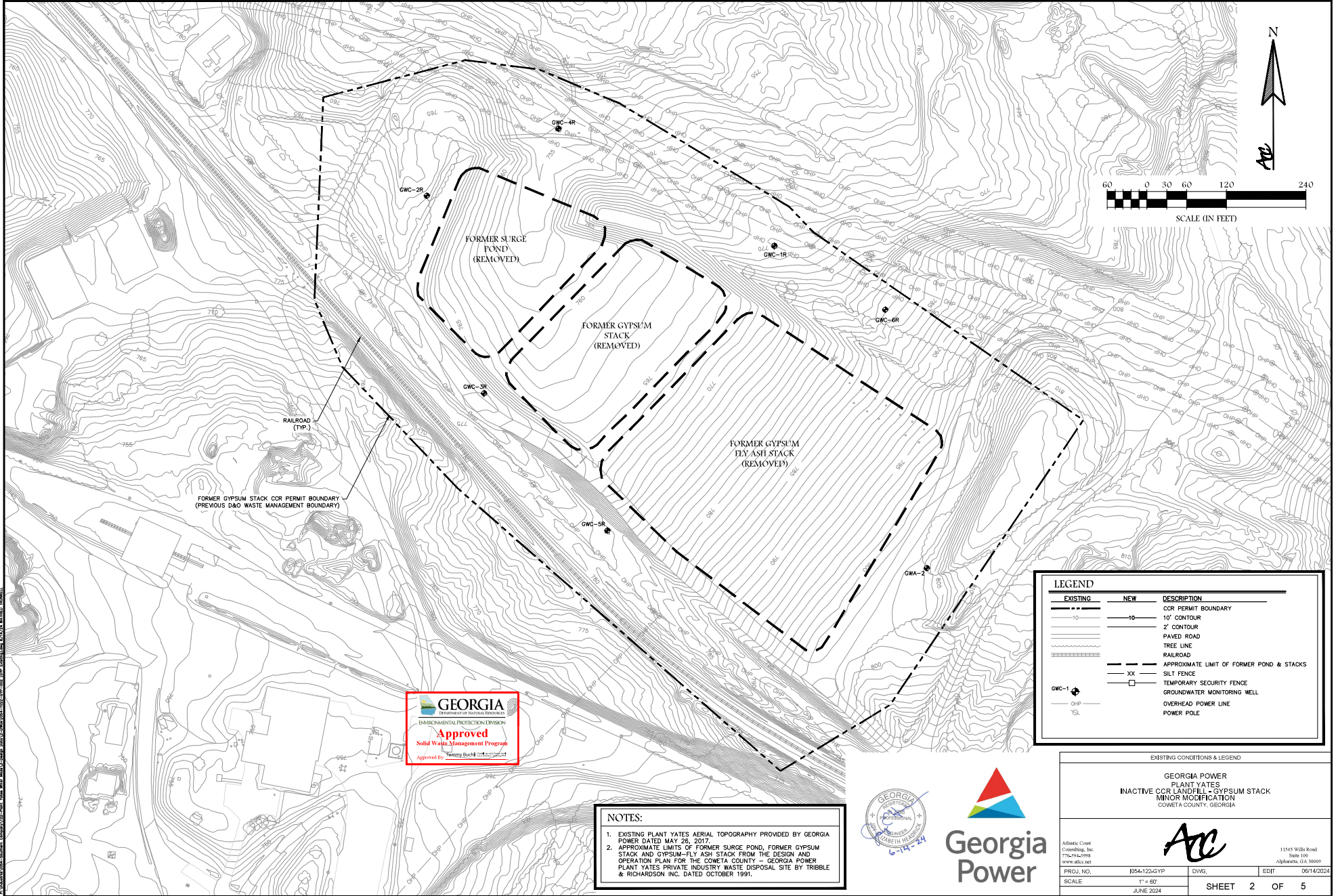
SHEET NO.	DESCRIPTION
1	COVER
2	EXISTING CONDITIONS & LEGEND
3	PROPOSED LAYDOWN YARD GRADING PLAN
4	EROSION & SEDIMENTATION CONTROL PLAN
5	DETAILS

P:\Working\Yates-Southern Company\122-Plant Yates-Plant Yates\122-Plant Yates\122-EPD\122-EPD-001 (Cover) (404) 506-6505 (6/14/24) MARISSA WAINELL



Atlantic Coast Consulting, Inc.
11545 Wills Road, Suite 100, Alpharetta, GA 30009
770-594-3998





LEGEND		
EXISTING	NEW	DESCRIPTION
---	---	CCR PERMIT BOUNDARY
---	---	10' CONTOUR
---	---	2' CONTOUR
---	---	PAVED ROAD
---	---	TREE LINE
---	---	RAILROAD
---	---	APPROXIMATE LIMIT OF FORMER POND & STACKS
---	---	SILT FENCE
---	---	TEMPORARY SECURITY FENCE
---	---	GROUNDWATER MONITORING WELL
---	---	OVERHEAD POWER LINE
---	---	POWER POLE

GEORGIA

 DEPARTMENT OF NATURAL RESOURCES

 ENVIRONMENTAL PROTECTION DIVISION

Approved

 Solid Waste Management Program

 Approved by *Anthony Buch*

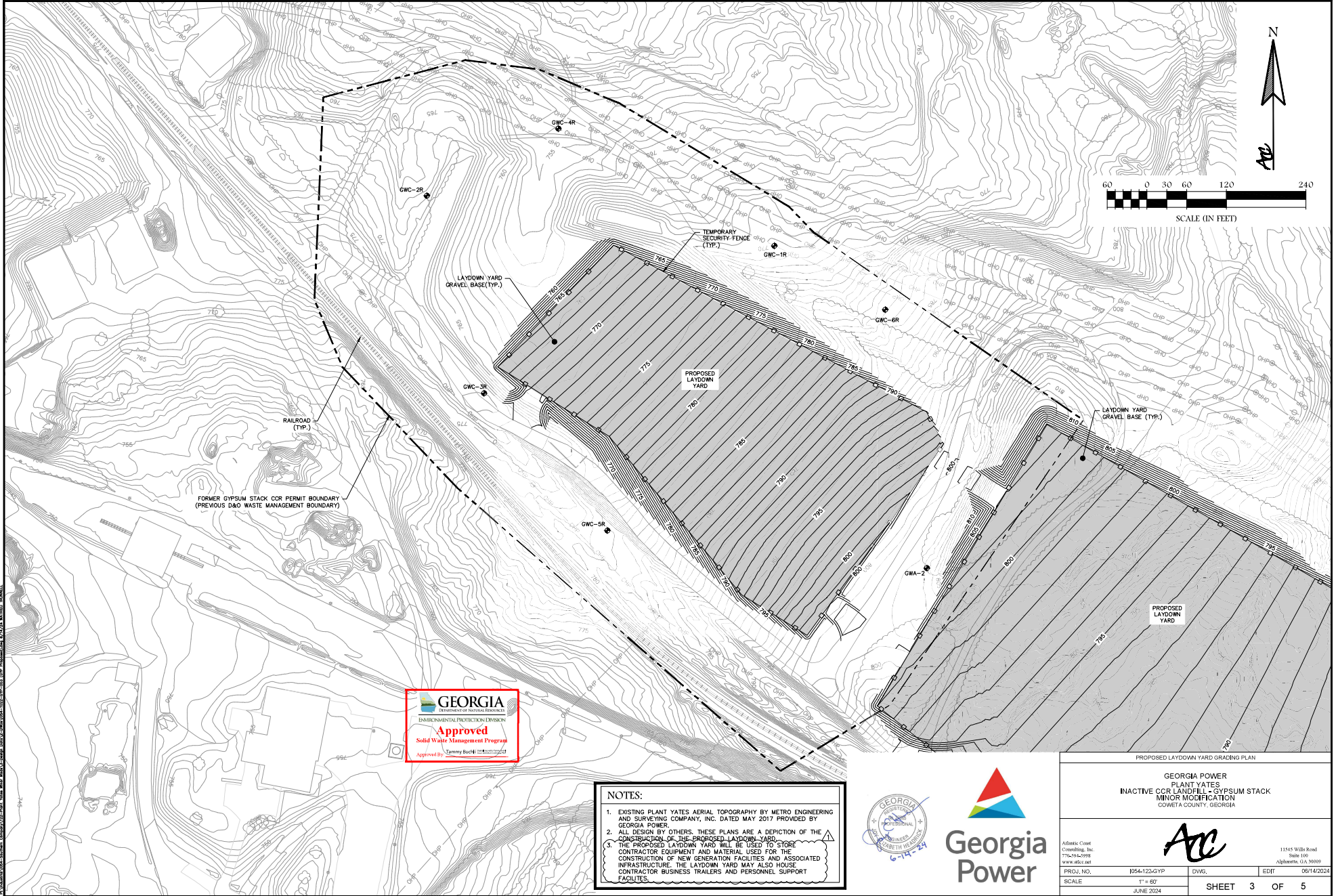
NOTES:

 1. EXISTING PLANT YATES AERIAL TOPOGRAPHY PROVIDED BY GEORGIA POWER DATED MAY 26, 2017.

 2. APPROXIMATE LIMITS OF FORMER SURGE POND, FORMER GYPSUM STACK AND GYPSUM-FLY ASH STACK FROM THE DESIGN AND OPERATION PLAN FOR THE COWETA COUNTY - GEORGIA POWER PLANT YATES PRIVATE INDUSTRY WASTE DISPOSAL SITE BY TRIBBLE & RICHARDSON INC. DATED OCTOBER 1991.




EXISTING CONDITIONS & LEGEND			
GEORGIA POWER PLANT YATES INACTIVE CCR LANDFILL + GYPSUM STACK MINOR MODIFICATION COWETA COUNTY, GEORGIA			
		11545 Webb Road Suite 100 Alpharetta, GA 30007	
AtlasGeo - Coweta CowetaReg. Inc. 770-54-9999 www.atlasgeo.net	PROJ. NO. 1054-123-GYP	DWG. EDIT	SHEET 2 OF 5
SCALE 1" = 50' JUNE 2024	DATE 06/14/2024		

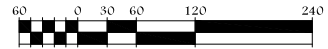
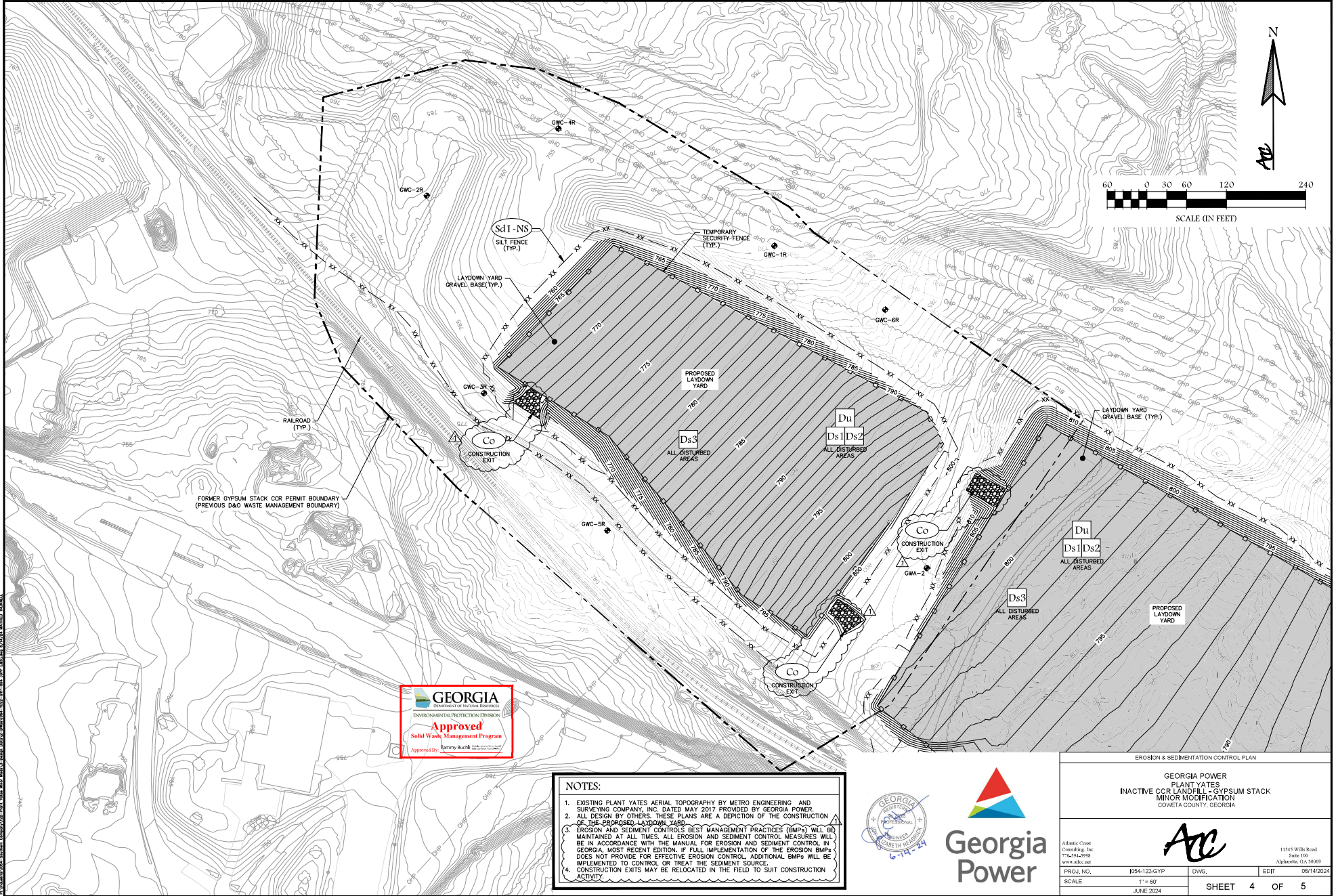


NOTES:

1. EXISTING PLANT YATES AERIAL TOPOGRAPHY BY METRO ENGINEERING AND SURVEYING COMPANY, INC. DATED MAY 2017 PROVIDED BY GEORGIA POWER.
2. ALL DESIGN BY OTHERS, THESE PLANS ARE A DEPICTION OF THE CONSTRUCTION OF THE PROPOSED LAYDOWN YARD.
3. THE PROPOSED LAYDOWN YARD WILL BE USED TO STORE CONTRACTOR EQUIPMENT AND MATERIAL USED FOR THE CONSTRUCTION OF NEW GENERATION FACILITIES AND ASSOCIATED INFRASTRUCTURE. THE LAYDOWN YARD MAY ALSO HOUSE CONTRACTOR BUSINESS TRAILERS AND PERSONNEL SUPPORT FACILITIES.



PROPOSED LAYDOWN YARD GRADING PLAN GEORGIA POWER PLANT YATES INACTIVE CCR LANDFILL + GYPSUM STACK MINOR MODIFICATION COWETA COUNTY, GEORGIA			
ATLANTIC COAST CONSULTING, INC. 770-54-9998 www.atlco.net		 11545 White Road Suite 100 Alpharetta, GA 30009	
PROJ. NO. 1054-123-SYP SCALE 1" = 50' JUNE 2024	DWG.	EDIT	06/14/2024
SHEET 3 OF 5			



SCALE (IN FEET)

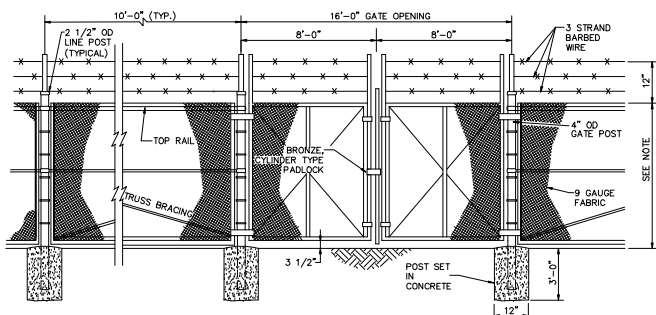


- NOTES:**
- EXISTING PLANT YATES AERIAL TOPOGRAPHY BY METRO ENGINEERING AND SURVEYING COMPANY, INC. DATED MAY 2017 PROVIDED BY GEORGIA POWER.
 - ALL DESIGN BY OTHERS. THESE PLANS ARE A DEPICTION OF THE CONSTRUCTION OF THE PROPOSED LAYDOWN YARD.
 - EROSION AND SEDIMENT CONTROLS BEST MANAGEMENT PRACTICES (BMPs) WILL BE MAINTAINED AT ALL TIMES. ALL EROSION AND SEDIMENT CONTROL MEASURES WILL BE IN ACCORDANCE WITH THE MANUAL FOR EROSION AND SEDIMENT CONTROL IN GEORGIA, MOST RECENT EDITION. IF FULL IMPLEMENTATION OF THE EROSION BMPs DOES NOT PROVIDE FOR EFFECTIVE EROSION CONTROL, ADDITIONAL BMPs WILL BE IMPLEMENTED TO CONTROL OR TREAT THE SEDIMENT SOURCE.
 - CONSTRUCTION EXITS MAY BE RELOCATED IN THE FIELD TO SUIT CONSTRUCTION ACTIVITY.



EROSION & SEDIMENTATION CONTROL PLAN	
GEORGIA POWER PLANT YATES INACTIVE CCR LANDFILL + GYPSUM STACK MINOR MODIFICATION COWETA COUNTY, GEORGIA	
<small>Atlanta, Ga Clearing, Inc. 770-594-9998 www.abc.com</small>	
<small>PROJ. NO. 1054123-GYP</small> <small>SCALE 1" = 50'</small> <small>JUNE 2024</small>	<small>DWG. 061422024</small> <small>EDIT</small> <small>SHEET 4 OF 5</small>

1: 10/20/2024 10:58:11 AM - User: k123456789 - Path: \\server\share\1054123-GYP\1054123-GYP.dwg - Plot: 1054123-GYP.dwg - Scale: 1" = 50' - Sheet: 4 of 5



NOTE:
1. FENCE HEIGHT TO BE DETERMINED BY CONTRACTOR.

CHAIN LINK FENCE & GATE DETAIL

N.T.S.

MONTH	TEMPORARY SEED	RATES / 1,000 SQFT.		FERTILIZER	LIME	PERMANENT SEED	RATE / ACRE	RATES / 1,000 SQUARE FEET		
		FERTILIZER	LIME					FERTILIZER	LIME	MAINTENANCE
JANUARY	RYEGRASS	40-50 lb.	12 lb(10-10-10)	45 lb		UNMILLED BERMAUDA	8-10 lb.	12 lb(10-10-10)	45 lb	10 lb(10-10-10)
FEBRUARY	RYEGRASS	40-50 lb.	12 lb(10-10-10)	45 lb		UNMILLED BERMAUDA	8-10 lb.	12 lb(10-10-10)	45 lb	10 lb(10-10-10)
MARCH	RYE ANNUAL LESPEDEZA WEEPING LOVEGRASS	2-3 bu. 20-25 lb. 4-6 lb.	12 lb(10-10-10) 35 lb(6-12-12) 12 lb(10-10-10)	45 lb 45 lb 45 lb		UNMILLED BERMAUDA	8-10 lb.	12 lb(10-10-10)	45 lb	10 lb(10-10-10)
APRIL	RYE BROWN TOP MILLET ANNUAL LESPEDEZA SUDAN GRASS	2-3 bu. 30-40 lb. 20-25 lb. 35 lb.	12 lb(10-10-10) 12 lb(10-10-10) 35 lb(6-12-12) 35 lb(6-12-12)	45 lb 45 lb 45 lb 45 lb		UNMILLED BERMAUDA	8-10 lb.	12 lb(10-10-10)	45 lb	10 lb(10-10-10)
MAY	WEEPING LOVEGRASS SUDAN GRASS BROWN TOP MILLET	4-6 lb. 35 lb. 30-40 lb.	12 lb(10-10-10) 35 lb(6-12-12) 12 lb(10-10-10)	45 lb 45 lb 45 lb		UNMILLED BERMAUDA	8-10 lb.	12 lb(10-10-10)	45 lb	10 lb(10-10-10)
JUNE	WEEPING LOVEGRASS SUDAN GRASS BROWN TOP MILLET	4-6 lb. 35 lb. 30-40 lb.	12 lb(10-10-10) 35 lb(6-12-12) 12 lb(10-10-10)	45 lb 45 lb 45 lb		UNMILLED BERMAUDA	8-10 lb.	12 lb(10-10-10)	45 lb	10 lb(10-10-10)
JULY	WEEPING LOVEGRASS SUDAN GRASS BROWN TOP MILLET	4-6 lb. 35 lb. 30-40 lb.	12 lb(10-10-10) 35 lb(6-12-12) 12 lb(10-10-10)	45 lb 45 lb 45 lb		UNMILLED BERMAUDA	8-10 lb.	12 lb(10-10-10)	45 lb	10 lb(10-10-10)
AUGUST	RYEGRASS WEEPING LOVEGRASS	40-50 lb. 35 lb.	12 lb(10-10-10) 12 lb(10-10-10)	45 lb 45 lb		UNMILLED BERMAUDA	8-10 lb.	12 lb(10-10-10)	45 lb	10 lb(10-10-10)
SEPTEMBER	RYEGRASS TALL FESCUE	40-50 lb. 30-50 lb.	12 lb(10-10-10) 35 lb(6-12-12)	45 lb 45 lb		UNMILLED BERMAUDA	8-10 lb.	12 lb(10-10-10)	45 lb	10 lb(10-10-10)
OCTOBER	WHEAT	2-3 bu.	12 lb(10-10-10)	45 lb		UNMILLED BERMAUDA	8-10 lb.	12 lb(10-10-10)	45 lb	10 lb(10-10-10)
NOVEMBER	WHEAT	2-3 bu.	12 lb(10-10-10)	45 lb		UNMILLED BERMAUDA	8-10 lb.	12 lb(10-10-10)	45 lb	10 lb(10-10-10)
DECEMBER	RYE RYEGRASS WHEAT	2-3 bu. 40-50 lb. 2-3 bu.	12 lb(10-10-10) 12 lb(10-10-10) 12 lb(10-10-10)	45 lb 45 lb 45 lb		UNMILLED BERMAUDA	8-10 lb.	12 lb(10-10-10)	45 lb	10 lb(10-10-10)

TEMPORARY GRASSING

Ds2

PERMANENT GRASSING

Ds3

TEMPORARY GRASSING	PERMANENT GRASSING
<p>SITE PREPARATION:</p> <ol style="list-style-type: none"> GRADE TO PERMIT THE USE OF EQUIPMENT FOR PIPELINT AND ANCHORING MOUNTING. INSTALL NEEDED EROSION CONTROL MEASURES AS REQUIRED SUCH AS DICES, DIVERSIONS, BERMS, TERRACES AND SEDIMENT BARRIERS. LOOSEN COMPACT SOIL TO A MINIMUM DEPTH OF 3 INCHES. 	<p>MATERIALS:</p> <ol style="list-style-type: none"> DRY STRAW/HAY - 2 TO 4 INCHES DEEP PROVIDING COMPLETE SOIL COVERAGE. WOOD WASTE (CHIPS/SANICUST/BARK) - 2 TO 3 INCHES DEEP. POLYETHYLENE FILM - SECURED OVER BANKS OR STRUCTURED SOIL MATERIAL FOR TEMPORARY PROTECTION.

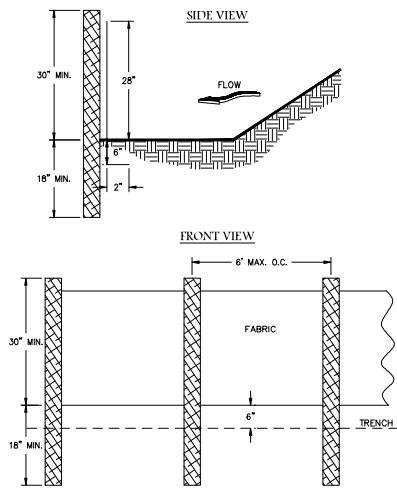
MULCHING

Ds1



LAYDOWN YARD GRAVEL BASE

N.T.S.

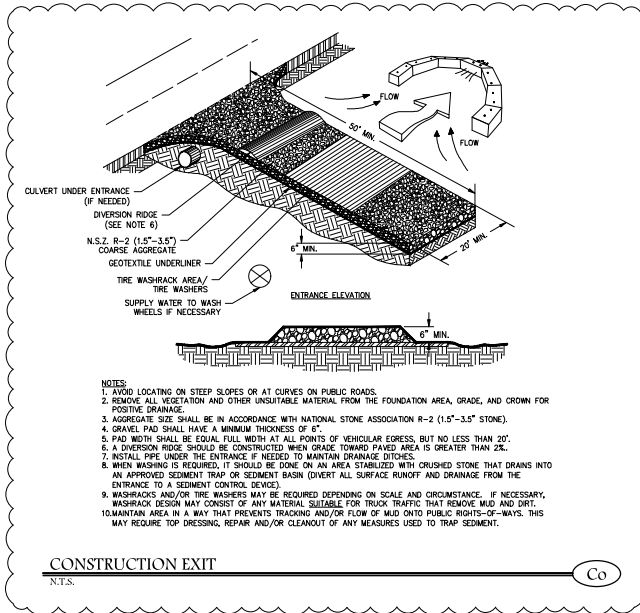


NOTE:
1. USE STEEL OR WOOD POSTS OR AS SPECIFIED BY THE EROSION, SEDIMENTATION, AND POLLUTION CONTROL PLAN.

SILT FENCE-NON SENSITIVE

N.T.S.

SF1-NS




NOTES:
1. AVOID LOCATING ON STEEP SLOPES OR AT CURVES ON PUBLIC ROADS.
2. REMOVE ALL VEGETATION AND OTHER UNSUITABLE MATERIAL FROM THE FOUNDATION AREA, GRADE, AND CROWN FOR POSITIVE DRAINAGE.
3. AGGREGATE SIZE SHALL BE IN ACCORDANCE WITH NATIONAL STONE ASSOCIATION R-2 (1.5'-3.5" STONE).
4. GRAVEL PAD SHALL HAVE A MINIMUM THICKNESS OF 6".
5. PAD WIDTH SHALL BE EQUAL FULL WIDTH AT ALL POINTS OF VEHICULAR EXPRESS, BUT NO LESS THAN 20".
6. A DIVERSION RIDGE SHOULD BE CONSTRUCTED WHEN GRADE TOWARD PADDED AREA IS GREATER THAN 2%.
7. INSTALL PIPE UNDER THE ENTRANCE IF NEEDED TO MAINTAIN DRAINAGE DITCHES.
8. WHEN WASHING IS REQUIRED, IT SHOULD BE DONE ON AN AREA STABILIZED WITH CRUSHED STONE THAT DRAINS INTO AN APPROVED SEDIMENT TRAP OR SEDIMENT BASIN (DIVERT ALL SURFACE RUNOFF AND DRAINAGE FROM THE ENTRANCE TO A SEDIMENT CONTROL DEVICE).
9. WASHRACKS AND/OR TIRE WASHERS MAY BE REQUIRED DEPENDING ON SCALE AND CIRCUMSTANCE. IF NECESSARY, WASHRACK DESIGN MAY CONSIST OF ANY MATERIAL SUITABLE FOR TRUCK TRAFFIC THAT REMOVE MUD AND DIRT.
10. MAINTAIN AREA IN A WAY THAT PREVENTS TRACKING AND/OR FLOW OF MUD ONTO PUBLIC RIGHTS-OF-WAYS. THIS MAY REQUIRE TOP DRESSING, REPAIR AND/OR CLEANOUT OF ANY MEASURES USED TO TRAP SEDIMENT.

CONSTRUCTION EXIT

N.T.S.

Co



DETAILS			
<p>GEORGIA POWER PLANT YATES INACTIVE CCR LANDFILL - GYPSUM STACK MINOR MODIFICATION CONYEA COUNTY, GEORGIA</p>			
			
<p>Atlanta - Onea Crawfordville, Inc. 770-594-9998 www.gp.com</p>		<p>11545 Watts Road Suite 100 Alpharetta, GA 30009</p>	
<p>PROJ. NO. 1054-123-GYP</p>	<p>DIVS.</p>	<p>EDIT</p>	<p>08/14/2024</p>
<p>SCALE 1" = 50'</p>	<p>JUNE 2024</p>	<p>SHEET 5 OF 5</p>	<p>5</p>



GEORGIA

DEPARTMENT OF NATURAL RESOURCES

ENVIRONMENTAL PROTECTION DIVISION

Jeffrey W. Cown, Director

Land Protection Branch
4244 International Parkway
Suite 104
Atlanta, Georgia 30354
404-362-2537

July 2, 2024

Ms. Lauren Petty
Environmental Affairs
Georgia Power
241 Ralph McGill Boulevard
Atlanta, GA 30308

SUBJECT: Coweta County – Georgia Power Plant Yates Gypsum Landfill
Minor Modification for Geotechnical Investigation - Approval
GEOS Submittal ID 848305

Dear Ms. Petty:

The Georgia Environmental Protection Division (EPD) received Georgia Power's *Plant Yates Gypsum Landfill Minor Modification Request – Geotechnical Investigation*, on June 11, 2024. The Request for Minor Modification to install up to 8 geotechnical borings is approved.

If you have any questions or need additional information, please contact us by email or phone at nabil.murshed@dnr.ga.gov and (470) 251-8106 or tammy.buchli@dnr.ga.gov and (470) 604-7150.

Sincerely,

**Tammy
Buchli**

Tammy Buchli
Environmental Engineer
Solid Waste Permitting Unit
Solid Waste Management Program

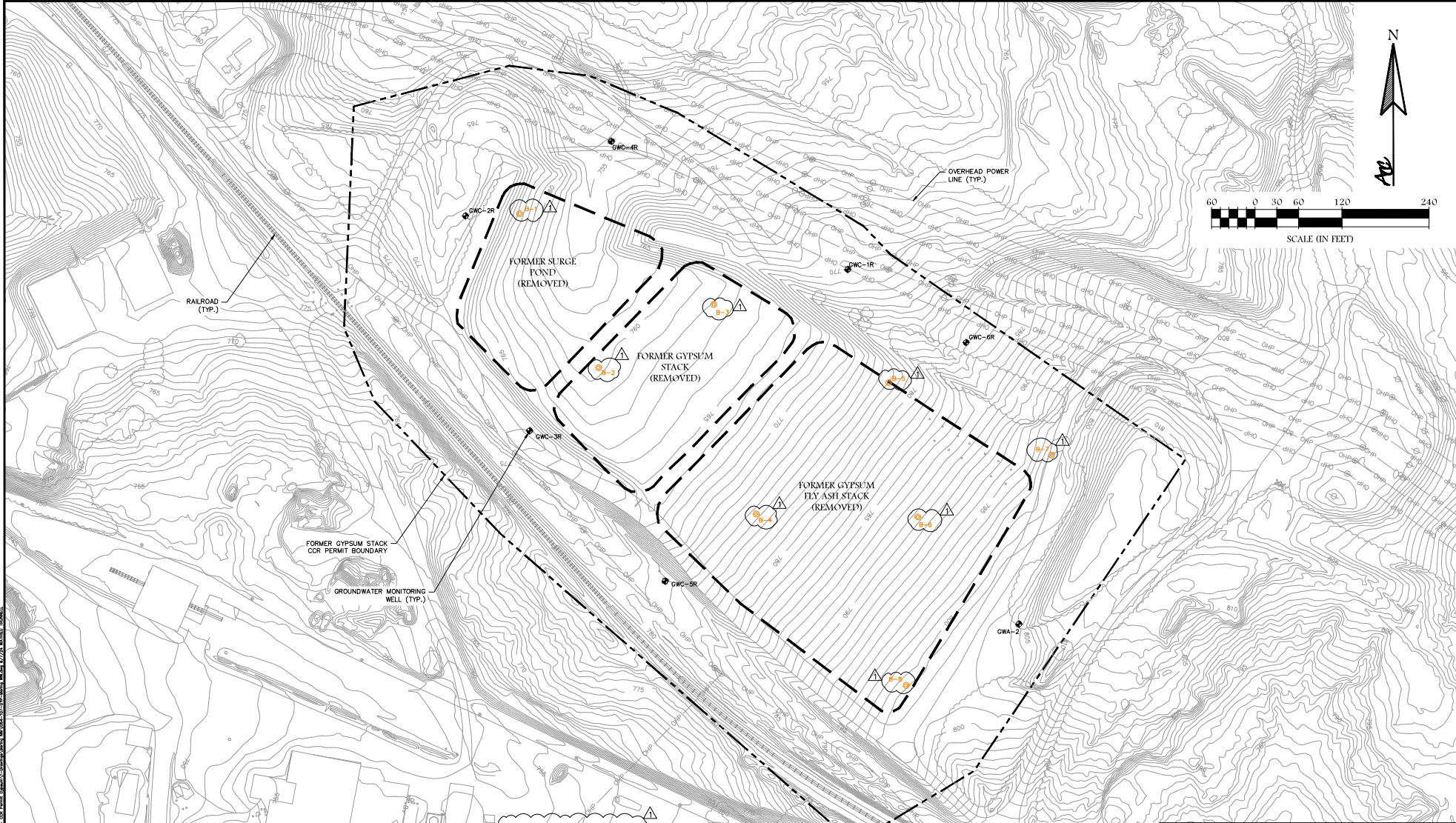
Digitally signed by
Tammy Buchli
Date: 2024.07.02
08:34:22 -04'00'

**Nabil
Murshed**

Nabil Murshed
Geologist
Environmental Monitoring Unit
Solid Waste Management Program

Digitally signed by
Nabil Murshed
Date: 2024.07.02
08:41:06 -04'00'

cc: Tyler Boyles, Tim Earl, David Gibbons, Bret McClellan: GP
William Cook, Keith Stevens, and Beverly Tipton: EPD
GEOS 848305



SCALE (IN FEET)

BORING SCHEDULE		
BORING	NORTHING	EASTING
BS-1	1261945.7	2072827.6
BS-2	1261733.2	2072936.5
BS-3	1261820.5	2073095.4
BS-4	1261531.2	2073154.1
BS-5	1261712.5	2073337.1
BS-6	1261527.0	2073378.9
BS-7	1261612.7	2073561.8
BS-8	1261294.6	2073361.0
BS-1 - BORING		

NOTES:

- EXISTING AERIAL TOPOGRAPHY PROVIDED BY GEORGIA POWER DATED MAY 26, 2017.
- GROUNDWATER WELLS PER THE ANNUAL GROUNDWATER MONITORING AND CORRECTIVE ACTION REPORT DATED FEBRUARY 27, 2024.
- EXISTING GROUNDWATER WELLS IN THE PROJECT AREA ARE TO BE PROTECTED DURING SITE EXPLORATION.
- ALL SOIL AND ROCK BORINGS WILL BE ABANDONED IN ACCORDANCE WITH THE 1985 WATER WELL STANDARDS ACT AND BORING LOGS AND ABANDONMENT REPORTS WILL BE SUBMITTED TO EPD WITHIN 60 DAYS OF COMPLETION OF FIELD EFFORTS.



Site Plan

SUBSURFACE INVESTIGATION
FOR
GEORGIA POWER
PLANT YATES
INACTIVE CCR LANDFILL - GYPSUM STACK
COWETA COUNTY, GEORGIA

ACC

11545 Wells Road
Suite 100
Alpharetta, GA 30609

PROJECT NO. 1054-107-GYP	DWG.	EDIT	06/09/2024
SCALE 1" = 50'	JANUARY 2024		
SHEET 1 OF 1			

C:\Users\jacob.miller\Desktop\1054-107-GYP\1054-107-GYP-Subsurface Investigation.dwg - 05/27/2024 10:00:00 AM - 1054-107-GYP-Subsurface Investigation.dwg - 05/27/2024 10:00:00 AM