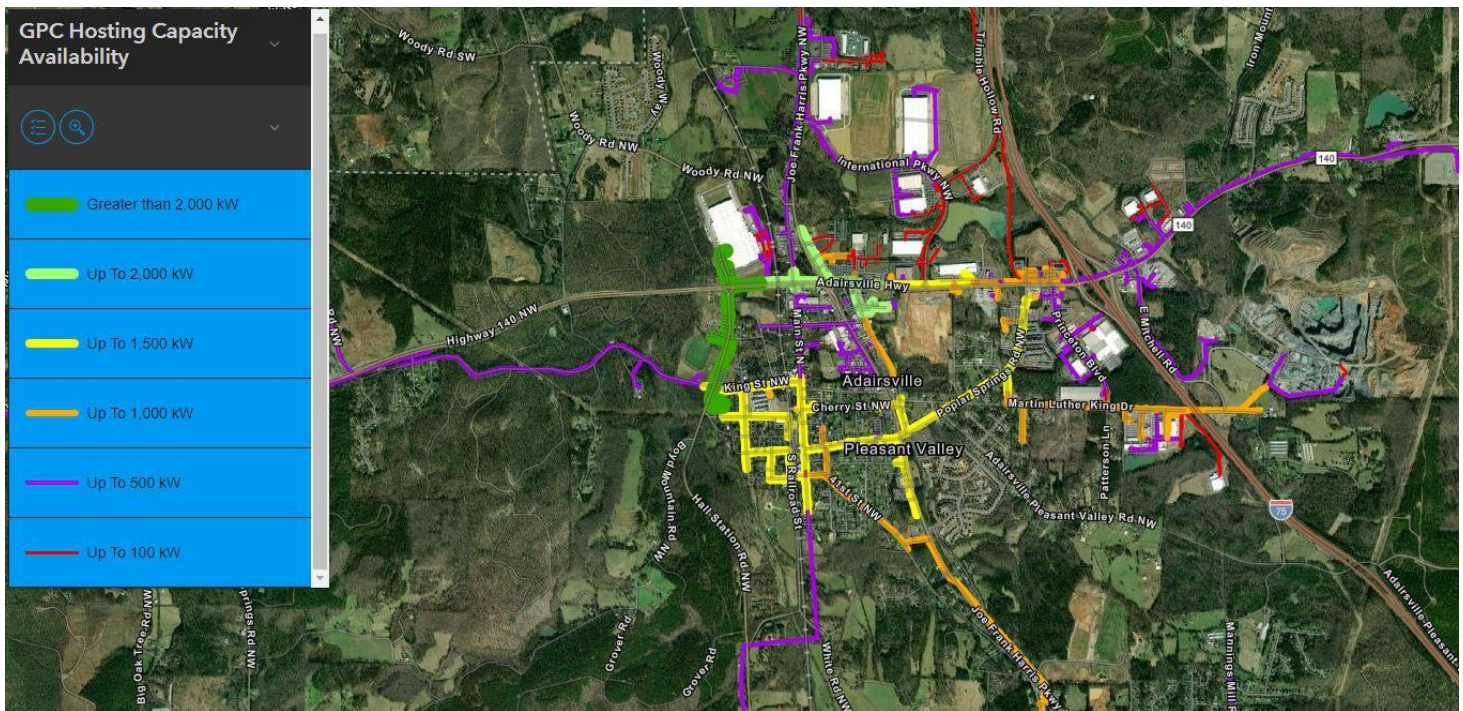


Overview of Hosting Capacity Tool

The Hosting Capacity Tool is part of GPC's [2022 Integrated Resource Plan \(IRP\)](#) – a 20-year plan to transform Georgia's energy grid through a proactive, innovative, and transformational roadmap projecting how GPC will continue to meet the energy needs of customers, local communities, and the State of Georgia for future generations.

The Hosting Capacity Tool was developed to offer customers and developers a preliminary screening tool to identify areas where a new distributed energy resource (DER) may be able to interconnect with minimal need for system upgrades. The Hosting Capacity Tool is an interactive map showing an estimate of the distribution grid's hosting capacity within GPC's service territory. As an example, below is a snapshot of one area within the Hosting Capacity Tool. Although the Hosting Capacity Tool may suggest availability in a particular area, space on any particular feeder is not guaranteed and may change at any time without notice.



The Hosting Capacity Tool may be most useful to Distributed Generation customers and developers evaluating installation of DERs between 250 kW and 6 MW. In general, sites in an area shown to have low available hosting capacity may be less economical when compared to sites in an area shown as having higher available hosting capacity.

The Hosting Capacity Tool may not account for all factors that impact interconnection costs, and the capacity shown in the Hosting Capacity Tool is based upon historical data and may not reflect current hosting capacity. The Hosting Capacity Tool is made available for informational purposes only and is not intended to substitute GPC's established interconnection application process.

Distributed Generation customers and developers are encouraged to participate in GPC's Interconnection Guidance Program, which enables GPC to assist in determining the feasibility of installing a DER within the GPC service territory. All customers and developers who wish to install a DER must submit an interconnection application, undergo an interconnection study, and pay applicable interconnection costs, even if the customer or developer previously used the Hosting Capacity Tool or Interconnection Guidance.

Using and accessing the Hosting Capacity Tool is an agreement to the terms of GPC's Hosting Capacity Tool Disclaimer. The legal disclaimer associated with the hosting capacity tool applies to all use of the tool. Registrants must also agree to keep confidential all information shared through the Hosting Capacity Tool by executing a nondisclosure agreement.

Frequently Asked Questions

What is hosting capacity analysis?

Hosting capacity analysis was performed with electric distribution modeling software. Each distribution feeder was analyzed to determine how much additional renewable generation can be safely and reliably integrated into each segment of the feeder without negatively impacting existing customers or facilities or requiring system upgrades. The analysis considered thermal limits, reverse power flow specifications, and voltage effects.

The analysis results are presented on a map showing the potentially available capacity for additional generation in each area, with line segments colored by capacity ranges. Data is shown in kilowatts (kW) of available hosting capacity for generation.



The analysis reflected in the Hosting Capacity Tool was conducted under then-current configurations. The Hosting Capacity Tool will show the publication date of the information.

Note: The hosting capacity map does not consider the impact of DER on the performance of voltage regulating devices such as substation or line regulators and transformer LTCs and their ability to maintain voltage within filing.

An interconnection study is needed to confirm the information shown in the hosting capacity map.

What was excluded from the hosting capacity analysis provided by GPC?

The current version of the Hosting Capacity Tool excludes the following:

- Industrial and network distribution feeders
- Feeders whose nominal voltage falls below 12 kV or above 25 kV
- Single-phase and two-phase portions of the circuit
- Line sections within proximity of GPC's critical assets and customers
- Interconnection projects not yet connected to the distribution system
- Assets not owned by GPC

Should a location of interest fall within one of the aforementioned exclusions, Interconnection Guidance is available year-round to provide technical information relating to interconnecting DERs within the system ([Interconnection Guidance](#)).

As noted above, the Hosting Capacity Tool does not depict or consider the assets of another utility. The Hosting Capacity Tool includes only the existing projects and assets within GPC's service territory. Copies of territorial maps showing the service territories of GPC and other utilities may be downloaded from the Georgia Public Service Commission's website, <https://psc.ga.gov/utilities/electric/>.



On the circuit pop up menu, what does the Hosting Capacity (Distribution) value indicate?

This value is the result from the analysis that was performed with electric distribution modeling software. Each distribution feeder was analyzed to determine how much additional renewable generation can be safely and reliably integrated into each segment of the feeder without negatively impacting existing customers or facilities or requiring system upgrades. The analysis considered thermal limits, reverse power flow specifications, and voltage effects.

On the circuit pop up menu, what does the Hosting Capacity (Transmission) value indicate?

This value is the result from a transmission evaluation. The purpose is to minimize upgrades and modifications beyond the Georgia Power distribution circuit by evaluating the potential of the following undesirable conditions: Affected Systems, Transient Overvoltage and Unintentional Islanding. These limits **DO NOT** indicate Hosting Capacity for a direct transmission interconnection.



How often is this map data within the Hosting Capacity Tool updated?

After the entire state is mapped within the Hosting Capacity Tool, the map will be updated annually.

The Hosting Capacity Tool indicates that a circuit potentially has sufficient capacity for my project. Do I still need to submit an interconnection application?

Yes. An interconnection application is still required to review the project in detail. For additional interconnection information, see Southern Company's DER Interconnection Policy, [https://www.georgiapower.com/content/dam/georgia-power/pdfs/company-pdfs/solar-pdfs/SOCO Interconnection Policy Binder 06-15-2021.pdf](https://www.georgiapower.com/content/dam/georgia-power/pdfs/company-pdfs/solar-pdfs/SOCO%20Interconnection%20Policy%20Binder%2006-15-2021.pdf). For purposes of the DER Interconnection Policy, the submission of a bid in response to a GPC request for proposals will be treated as an interconnection application, and a developer should not submit a separate interconnection application for any project that forms the basis of a bid.

My proposed project is larger than the available hosting capacity. Does this mean the DER cannot be interconnected?

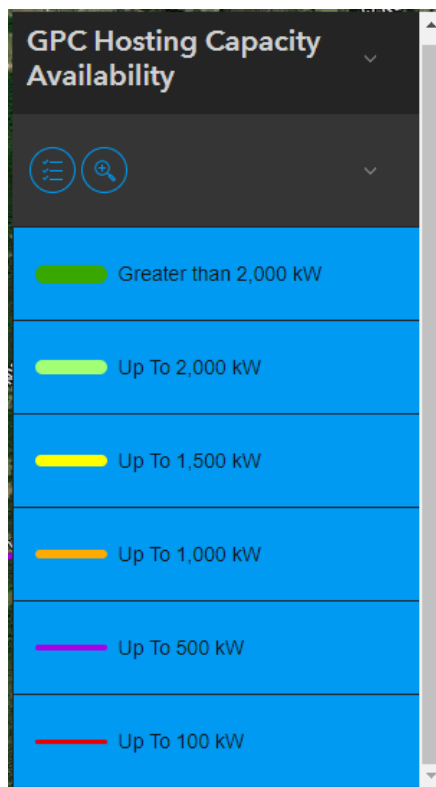
No. In general, this means that additional system upgrades may be required to facilitate interconnection. The guidelines for GPC's Distributed Generation programs do not allow for substation- or transmission-level upgrades unless the prospective generator requests a state-jurisdictional or FERC-jurisdictional interconnection as a qualifying facility pursuant to the Public Utilities Regulatory Policies Act.

Interconnection Guidance ([Interconnection Guidance](#)) is available to provide additional site-specific information. Potential DER site re-sizes will be identified during Interconnection Guidance.



How does the Hosting Capacity Tool work?

Open one of the maps and move to the desired region in GPC's service territory, zooming in (+ button) and out (- button) as needed. A "Find address or place" search tool is located in the upper right-hand corner. Click the menu button in the upper left-hand corner to see the legend showing the capacity range indicated by each line color, as depicted in the example below.



Will the hosting capacity map file be shared with customers or developers?

No. The information available within the Hosting Capacity Tool is considered confidential and must not be disclosed. The Hosting Capacity Tool results can only be viewed within the tool after registering. All registered users must agree to a Nondisclosure Agreement, and only registered users are allowed to use the tool and its information.



What is Interconnection Guidance?

Interconnection Guidance is available for distribution-level projects sized up to 6 MW AC. Interconnection Guidance is intended to assist customers and developers determine the feasibility of installing DER on the GPC system. Interconnection Guidance may identify transmission system upgrades or other interconnection constraints that could limit or prevent the DER's ability to meet GPC's renewable program requirements. GPC offers three tiers of guidance, each providing additional levels of information to the customer or developer regarding the potential interconnection of a proposed DER. Additional information regarding GPC's Interconnection Guidance program is available ([Interconnection Guidance](#)).

Like the Hosting Capacity Tool, Interconnection Guidance is based upon the connected load and generation on the system at the time the Interconnection Guidance is delivered. The available capacity on a distribution circuit may change when the project is evaluated for program participation.

Who do I contact if I have questions?

All questions can be sent to G2HSTCAPTL@southernco.com.



Registration

How do I gain access to use the Hosting Capacity Tool?

All users must register annually to obtain a license, which will be valid for the calendar year in which they register.

The tool will be available through our [Accion website](#) for interested bidders. It will be located in the Confidential Interconnection Tools folder from the Documents tab in Accion. This folder will become available after registering from the Interconnection Tool Registration tab where you will provide the following information:

- First & last name;
- Company name;
- Email address (email domain must correspond to company name);
- Preferred username; and
- Business purpose associated with the request for access.

As part of the registration process, users must acknowledge the terms of the Hosting Capacity Tool disclaimer and execute a nondisclosure agreement.

Can I add additional users to my account?

No, each user is required to register for an individual account.

Do I need to setup multifactor authentication?

Yes, multifactor authentication is required to continue using the tool. MFA will be monitored periodically, and access will be revoked without notice if the user has not enabled MFA. Please see instructions on how to activate MFA in the technical support section of this FAQ document.



Cost / Fees

Do I need to pay a fee for my company, or does each additional user require a registration fee?

The first initial license per company will be at no cost. Additional licenses per company will incur a \$400 fee.

When will the license expire?

The license is valid for the calendar year in which the license was issued.

How do I pay for a license? Is there an online portal for payment?

Payments can be made by wire transfer or checks only.

Georgia Power Company
241 RLPH McGill Blvd, NE
Bin 10196 - Renewables Program Manager
Atlanta GA 30308
Bank of America
Acc No 4451265461
ABA: 111000012 (Checks)
ABA: 026009593 (Wires)

Will I receive a credit toward the Interconnection Guidance fee if I purchase a Hosting Capacity Tool license?

No, the Hosting Capacity license fee will not be credited toward the fees for Interconnection Guidance or interconnection study fees.

Can I cancel my license?

Licenses can be cancelled by emailing G2HSTCAPTL@southernco.com. However, there will be no refund if any fees have been incurred.



Can I add additional users to my account?

No, each user is required to register for an individual account.

Technical Support

Who do I contact for technical support?

Please email G2HSTCAPTL@southernco.com for technical assistance.

How do I change my password?

Your password can be changed through your profile in the Security section of the My Settings menu.

How do I reset my password?

Users may request a password reset by emailing G2HSTCAPTL@southernco.com. The email must include the user's first and last name, company name, and **registered** email address.

Can I change my username?

No, usernames cannot be changed.

Can I update my email address?

Yes, you can update your email address in your profile in the General section of the My Settings menu.



What browsers should I use to access the tool?

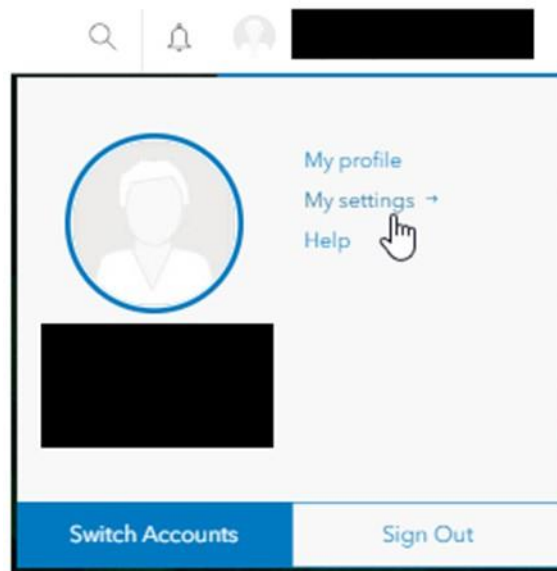
The Hosting Capacity tool is supported on the following browsers:

- Google Chrome version 99 and later
- Microsoft Edge version 99 and later
- Mozilla Firefox version 100 and later
- Mozilla Firefox version 91 (ESR)
- Safari version 14 and later

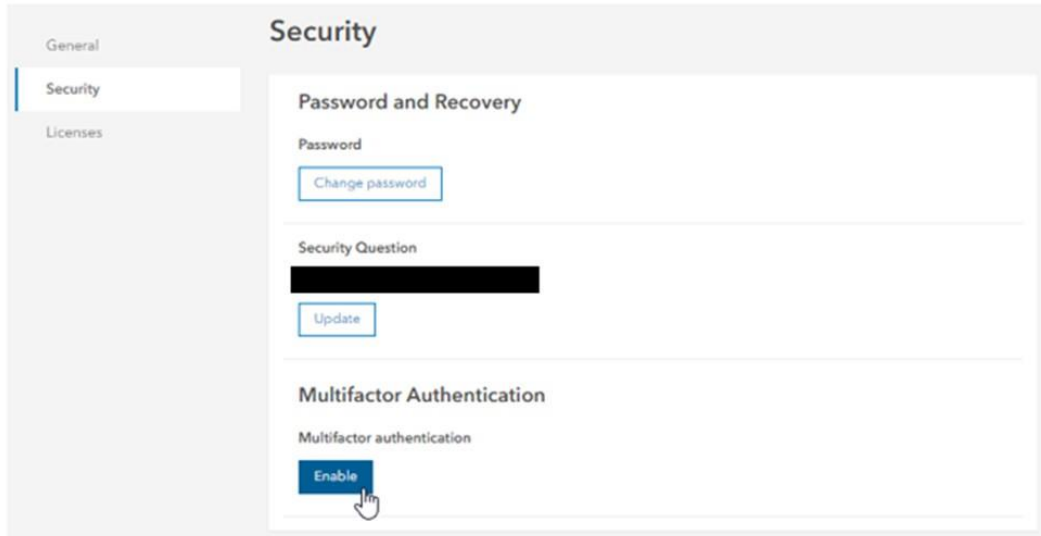
For best performance and full functionality, use the latest version of a browser listed above. The Hosting Capacity Tool leverages the local storage capabilities (similar to cookies) of the browser. If this storage is disabled, the site will not function properly. To learn how to enable local storage, consult the browser's documentation.

To Setup Multifactor Authentication:

1. After account creation, from the homepage, [GPC Hosting Capacity \(arcgis.com\)](https://arcgis.com), click on your profile in the upper right-hand corner then select 'My settings'



2. Then select the 'Security' menu and click enable under 'Multifactor Authentication'



General

Security

Licenses

Security

Password and Recovery

Password

Change password

Security Question

Update

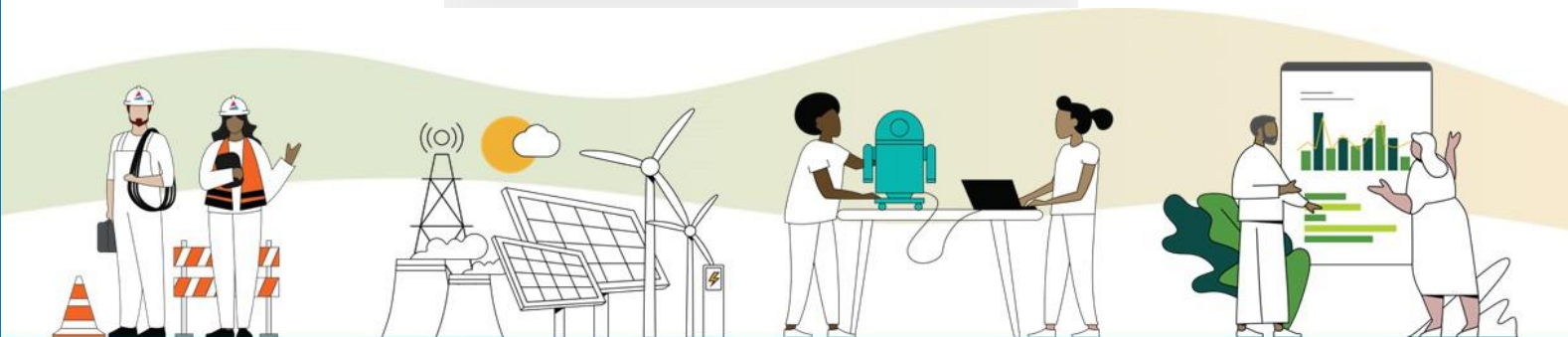
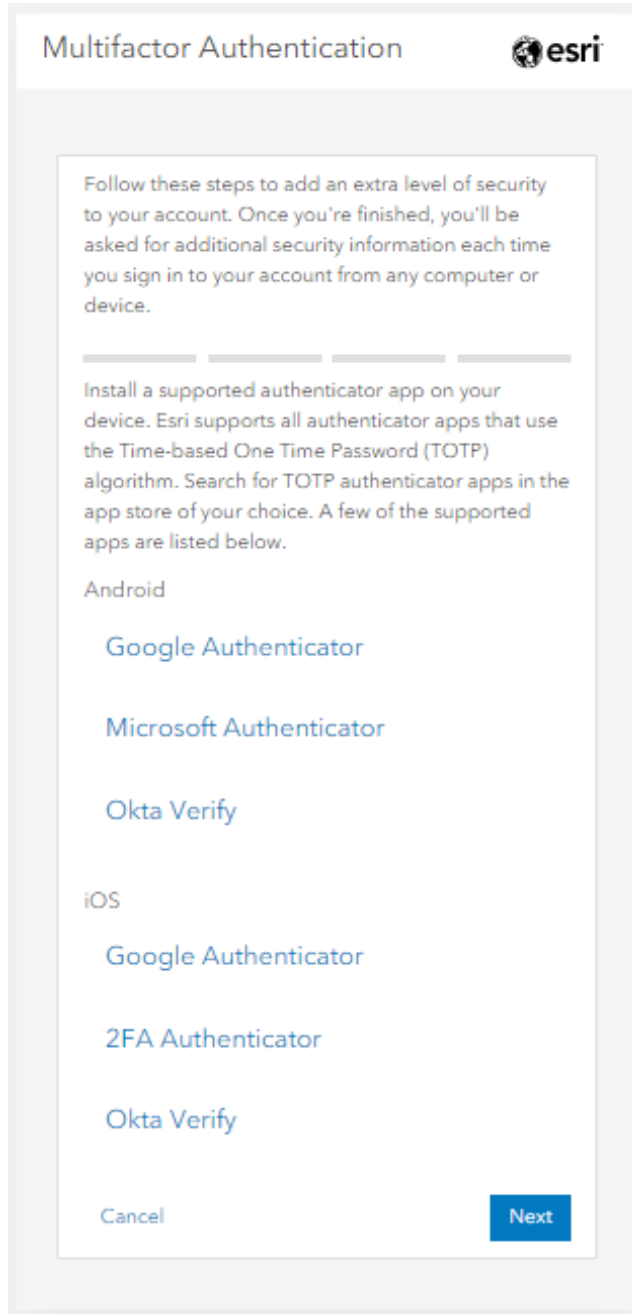
Multifactor Authentication

Multifactor authentication

Enable



3. After enabling, then install a supported authenticator app on your preferred mobile device. Listed are a few of the supported apps.



4. Then follow the instructions listed online and, on your phone, to finish setting up the MFA.
5. Once completed, you can check the MFA status from the 'Security' menu and it will now read 'Disable'

